

Access to internal detector components ASM 192 T2D+

Precautions

Switch the detector off before opening it.

Disconnect the line power plug, the RS 232 connector, the printer and the input/output interface if they are connected to an external element (to avoid obtaining "external" voltages on the various detector boards).

Access level 1



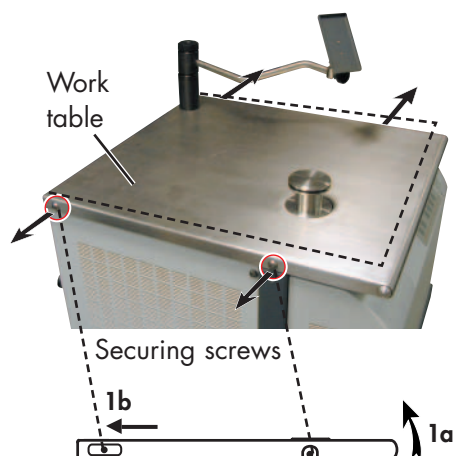
Use the 5 mm Allen wrench you find in the "Maintenance kit".

Maintenance kit **F 10**

Lifting plate:

If they are always on the side of the leak detector, remove the 4 lifting plates.

Precautions and unpacking **B 10**



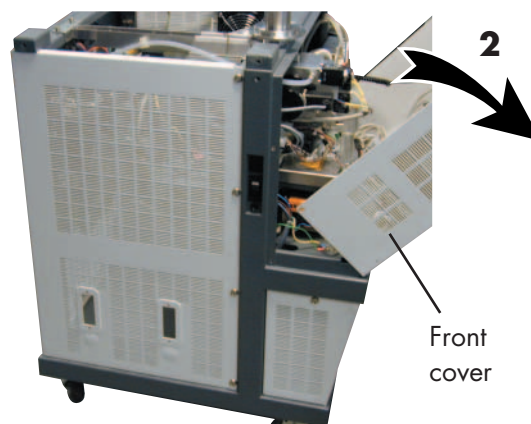
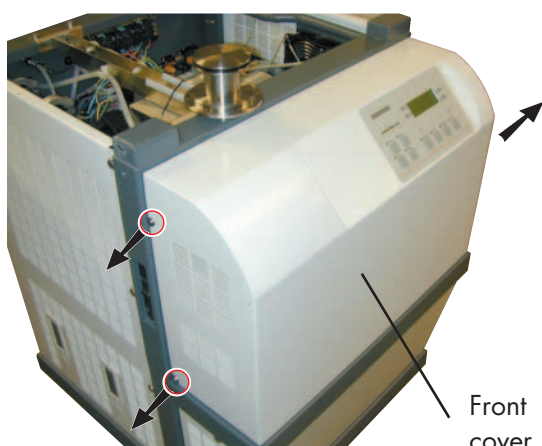
Work table:

Unfasten lightly the 4 securing screws and raise the work table (**1a** and **1b**): this allows to disengage the front cover without take off the work table.

Front cover:

After unfastening the 4 screws, pivot it forwards until it comes to a stop (**2**).

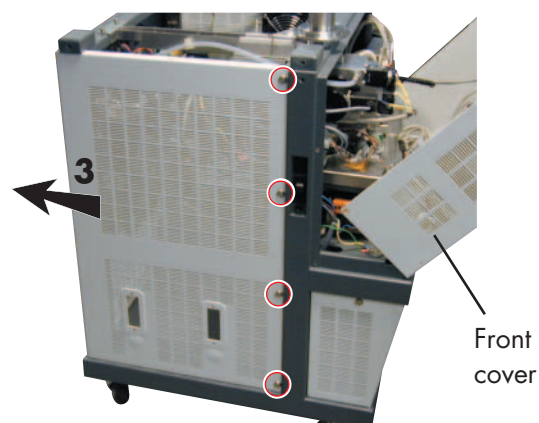
Using this system, the cover can be kept 3/4 open.



Access to internal detector components ASM 192 T2D+

Rear cover:

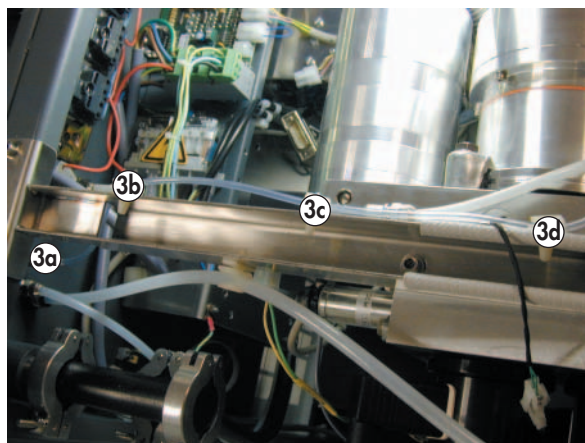
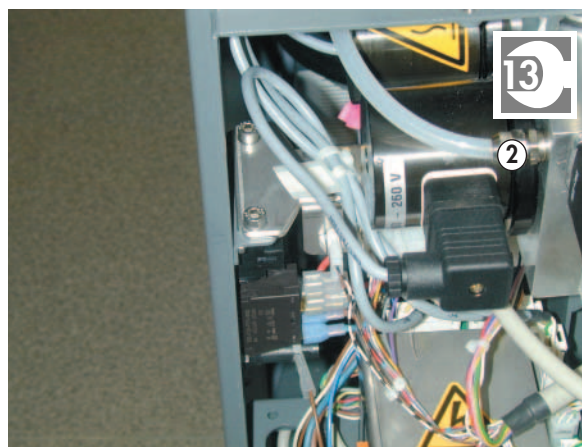
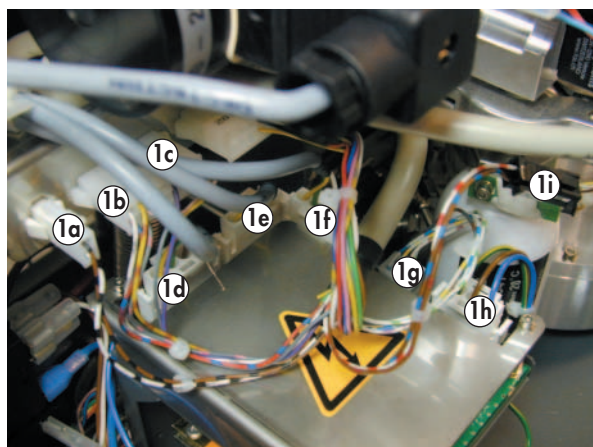
Unfasten the 8 screws (4 on each side) and remove the rear cover (3).



Access level 2 disassemble the main block

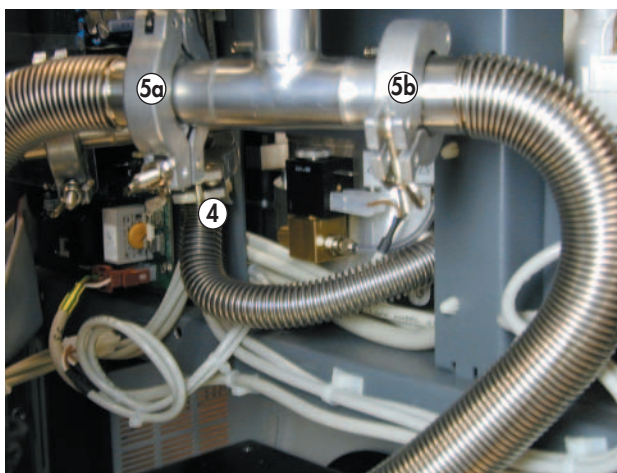
To be applied after access level 1 is completed (rear cover removed).

- ① Remove the connections (1a to 1i).
- ② Remove the inlet air tube.
- ③ Remove the long distance sniffer tube (3a to 3d).

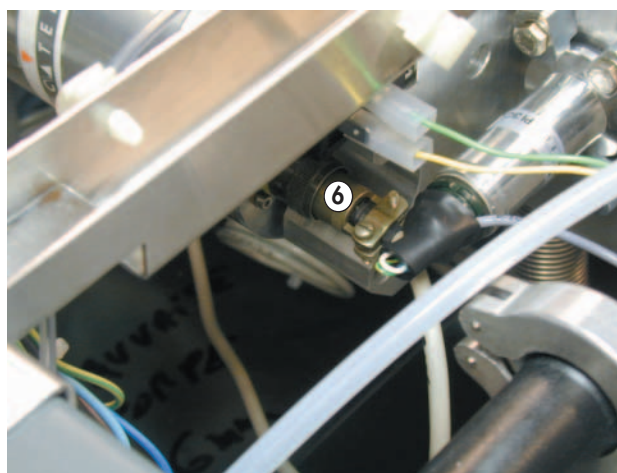


Access to internal detector components ASM 192 T2D+

- ④ Disconnect the primary pump from the vacuum block.
- ⑤ Disconnect the ACP 20/28 from the vacuum block (1 clamp).
Nota: if your leak detector is equipped with the 50 m³/h roughing option, there is 2 clamps (⑤a and ⑤b).
- ⑥ Disconnect the MDP 5006 HDS from the vacuum block.



Nota: detector equipped with the 50 m³/h roughing option



Access to internal detector components ASM 192 T2D+

- ⑦ Disconnect the TMP 5154 (⑦a to ⑦d).
- ⑧ Remove the 7 screws which fix the vacuum block to the frame (⑧a to ⑧g).

