





## Partial maintenance of the ACP 20/28 pump (ASM 192 T2D+ leak detector)

*The frequency of the preventive maintenance tasks is listed in section D 10.*

Tools required:

Allen wrench Ø 3 mm , 4 mm  and 5 mm,  
Open end wrench or ring spanner Ø 10 ,  
Phillips screwdriver .



For all the maintenance operations on the  
ACP 20/28 pump, please contact customer service.

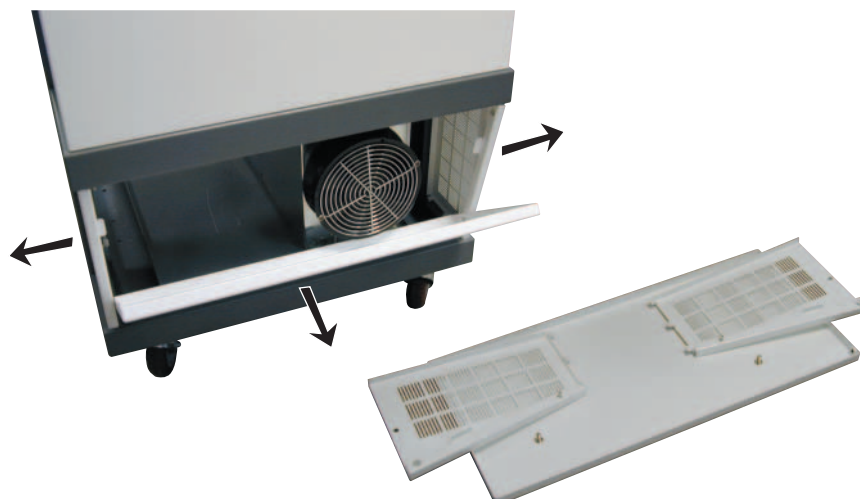
### Access to the pump

■ To be applied after access level 2 is completed.

 **Access to internal components**  E 21

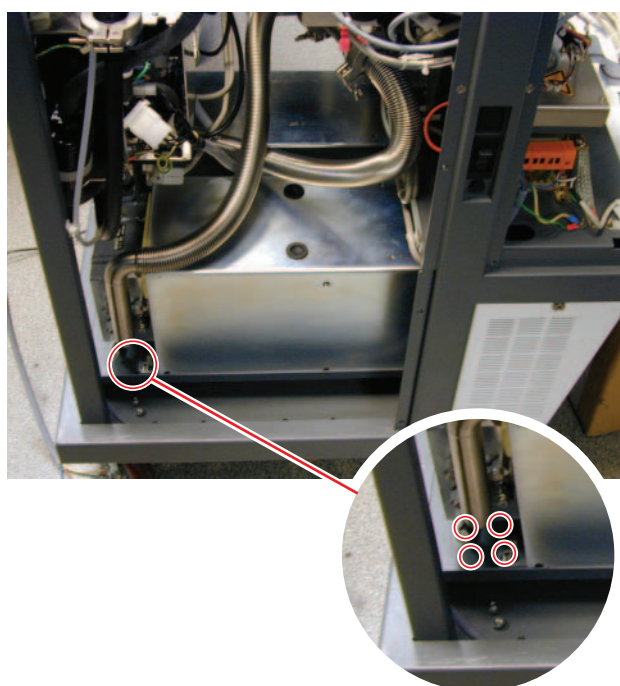
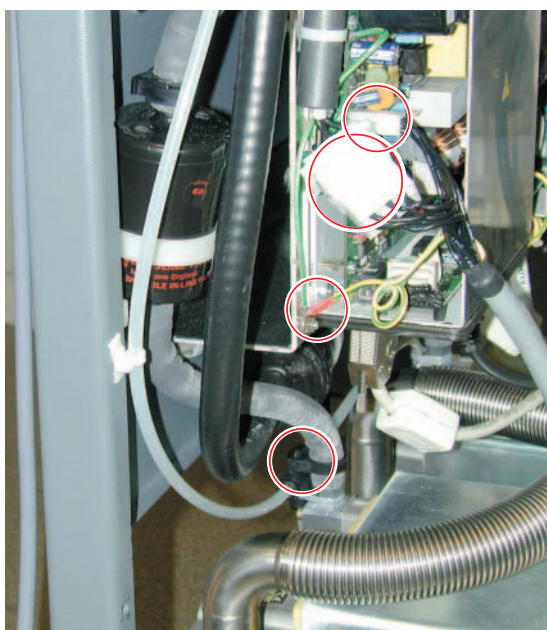
■ Remove the 2 white stoppers and unfasten the 4 screws and their washers.

■ Remove the 2 lateral sides.

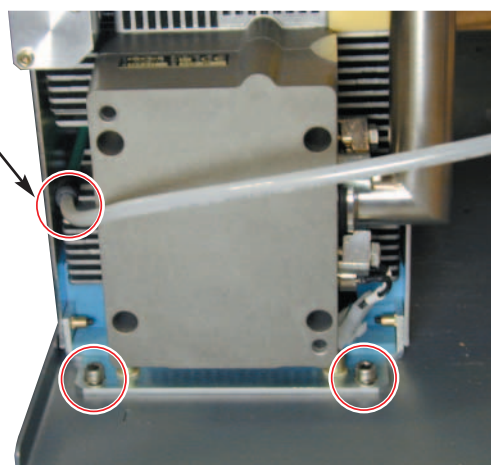


## Partial maintenance of the ACP 20/28 pump (ASM 192 T2D+ leak detector)

- Disconnect the pump to the variator and to the filter.
- Remove the connection to the vacuum block.

**5**

- Unfasten the 4 fixing screws of the pump.
- Remove the nitrogen purge.



## Partial maintenance of the ACP 20/28 pump (ASM 192 T2D+ leak detector)

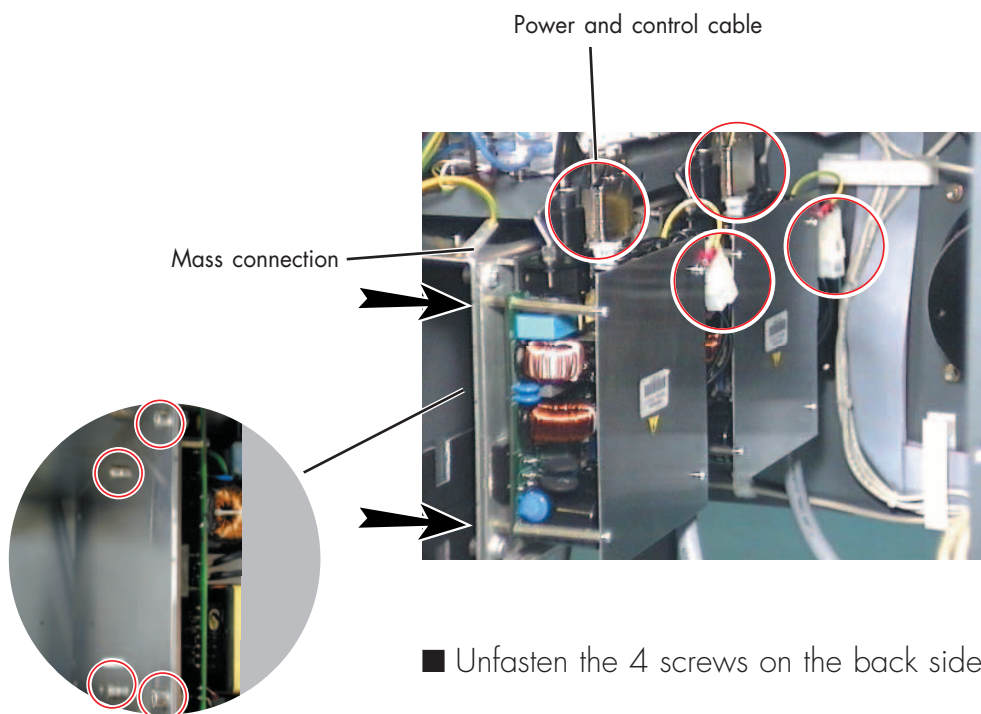
### Access to the ACP 20/28 variator drive

■ To be applied after access level 2 is completed.

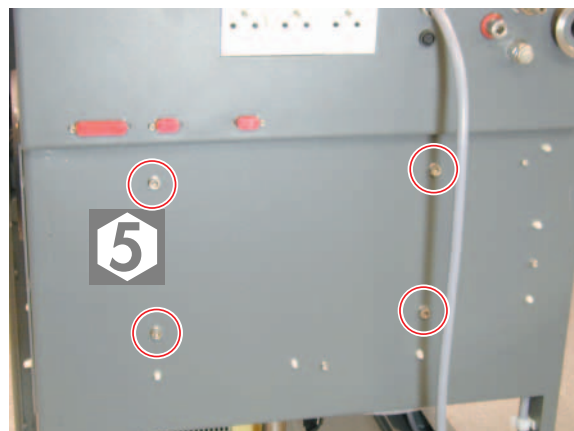
 **Access to internal components**  E 21

■ Disconnect the variator to the pump. Remove the power and control cables.

■ Disconnect the variator to the pump and the mass connection also.



■ Unfasten the 4 screws on the back side.



■ Unfasten the 4 screws which fix the variator on its support.