



Cryogenic Refrigerator

INSTALLATION, OPERATION and ROUTINE MAINTENANCE MANUAL



FOR SALES AND SERVICE PLEASE CALL:

PTB SALES

T :: 626.334.0500
service@ptbsales.com
www.ptbsales.com

DATE SERVICED: _____

VIEW OUR INVENTORY

The information contained in this document is believed to be accurate and reliable as of the time of its publication. However, Cryomech, Inc. cannot accept any responsibility (financial or otherwise) that may result from the use or misuse of the information contained in this document. Except as expressly contained in this document, there are no other warranties granted or extended by the manufacturer.

Cryomech, Inc. reserves the right to add, change, modify or delete any or all information contained herein without prior written notice. Revisions to this document may be issued at the time such changes and/or deletions occur.

Any duplication of this manual or any of its parts without expressed written permission from Cryomech, Inc. is expressly prohibited.

Correspondence concerning this document should be forwarded to:

Customer Service Department
Cryomech, Inc.
113 Falso Drive
Syracuse, NY 13211 USA

Telephone (315) 455-2555
FAX: (315) 455-2544

Email: cryoservice@cryomech.com

Website: www.cryomech.com

Contents

Section 1
Overview

Section 2
Warranty

Section 3
Safety

Section 4
Inspection and Unpacking

Section 5
Specifications

Section 6
Installation

Section 7
Operation

Section 8
Routine Maintenance

Appendix A

Appendix B
Spray Lubricant Instructions



Section 1

Overview



Section 1: Overview

This section provides an overview discussion of Cryomech Cryorefrigerators. It also provides an overview of this manual, including the organization, basic definitions of terms used and expansion of acronyms used in the manual.

1.1 Cryogenic refrigeration system

1.1.1 General description

The operation of a cryogenic refrigeration system is based on a closed-loop helium expansion cycle. A complete system consists of two major components: one is the compressor package, which compresses refrigerant and removes heat from the system; the other is the cold head, which takes refrigerant through one or more additional expansion cycles to cool it down to cryogenic temperatures. The refrigerant gas used in the Cryomech cryogenic systems is 99.999% pure helium. Flexible stainless steel lines called helium flex lines carry compressed helium from the compressor package to the cold head and carry low-pressure helium back.

The compressor package works as follows. An oil-lubricated compressor compresses the pure low-pressure helium that is returned from the cold head. The heat of compression is removed via a heat exchanger, and the oil from the compression process is removed in a series of oil separators and filters. The compressed helium is then fed to the cold head via the high-pressure helium flex line.

In the cold head, adiabatic expansion of the helium and further heat removal allows cooling to cryogenic temperatures. The low-pressure helium then returns to the compressor package via the low-pressure helium flex line.

1.1.2 Features and benefits of the Cryomech GM Cold Head

The Cryomech GM (Gifford-McMahon) Cold Head has been carefully designed and manufactured to provide years of trouble free service.

Primary features

The Cryomech GM Cryorefrigerator is highly efficient, using a pneumatically driven displacer and a rotary valve. This results in a cold head that has no seals at cryogenic temperatures, and is easy to service in the field by the user.

Primary benefits

- Can be operated in any orientation
- High reliability
- Easily serviced in the field
- Low cost of operation and maintenance

1.2 Cryomech Cryorefrigerator Manual

This manual covers the complete Cryomech Cryorefrigerator that consists of the GM Cold Head, the Helium Compressor Package, a cold head motor cord and a set of helium flex lines.

It is important that you review this manual carefully before beginning the installation process.

1.2.1 Organization of the manual

The main body of the manual provides a detailed discussion of everything you will need in order to install and operate the Cryomech Cryorefrigerator and to perform routine maintenance. It is divided into 8 sections. Illustrations accompany the discussion as needed for clarification. Additional information will be in the appendix.

Numbered lists labeled with 1), 2), etc and lettered lists labeled with a., b., etc. are used for sequential actions that must be performed in the order listed. Lists for which order is not important are bulleted, using solid or hollow bullets.

The manual contains essential information for the safe and effective operation of your Cryomech Cryorefrigerator. Sections 2 and 3 clearly lay out all safety precautions you should take and also explain the ways in which you might inadvertently void your warranty by doing something that would damage the system.

Sections 4 through 8 provide complete step-by-step instructions on the handling of your Cryomech Cryorefrigerator, from inspection of the packing crate through routine maintenance. Each safety precaution is also shown in these sections in every place where observing the caution or warning is important.

- Section 1: Overview (including definitions and acronyms)
- Section 2: Warranty
- Section 3: Safety
- Section 4: Inspection and unpacking
- Section 5: Specifications
- Section 6: Installation
- Section 7: Operation
- Section 8: Routine maintenance
- Appendix: Additional information

1.2.2 Related documents

Technical manual

A separate detailed technical manual will be available by contacting Cryomech. This manual covers the theory behind cryorefrigerators, and supplies detailed information on optimizing instrumentation and insulation of cold heads for maximum performance.

1.3 Glossary

1.3.1 Definitions

The terms defined below are used with precision in the manual. For example, distinction is made between the (cryorefrigerator) system, the (compressor) package, and the (compressor) module.

The terms are in alphabetical order, and italicized terms within the definitions are terms that are also defined in this section.

Aeroquip® Couplings:

The term "Aeroquip® couplings" is used generically to describe the self-sealing fittings that connect components e.g. that connect *helium flex lines* to the *compressor package* and *helium flex lines* to the cold head.

Category II Installation:

Category II refers to the potential for transient over-voltage conditions in the mains power connection to the equipment. See IEC 664, Sub-clause 5.6 for further details.

Closed Loop System:

This refers to a cryogenic *system* that has no helium loss because the helium is cycled through a closed loop. The advantage of such a *system* is that there is no need to add helium.

Cold Head:

The cold head is an expansion device, which is capable of reaching *cryogenic temperatures*. In the AL or GB systems the cold head is a *Gifford-McMahon* style unit. In the PT series systems the cold head is a *Pulse Tube* style unit.

Cold Head Motor Cord

The cold head motor cord is pre-wired and fitted with electrical connectors on each end that attach to the *cold head* and *compressor package*. The cold head motor cord provides electrical power from the *compressor package* to the *cold head* motor.

Compressor Module:

Located inside the *compressor package*, the compressor module is an oil-lubricated commercial compressor that compresses low-pressure helium to the necessary high pressure.

Compressor Package:

The compressor package houses the *compressor module* and all other components that cool and purify helium and that provide system safety control. The compressor package compresses the low-pressure helium returning from the *cold head* and provides clean high-pressure helium to the *cold head*.

Cryogenic Temperatures:

Temperatures lower than 120K or -153°C.

Cryorefrigerator (Cryocooler):

A cryorefrigerator is a cryogenic refrigeration *system* based upon a closed loop helium expansion cycle. It consists of a *compressor package*, *helium flex lines* and a *cold head* (expansion device).

Cold Head Heat Exchanger:

The heat exchanger(s) on the *cold head* provide cooling at cryogenic temperatures by transferring heat to the helium within the system.

Gifford-McMahon (GM) Cryorefrigerator

A Gifford-McMahon cryorefrigerator is a *cryorefrigerator* in which the *cold head* expands the helium using a displacer or piston.

Helium Flex Lines:

The helium flex lines are corrugated stainless steel hoses that transport helium between the *compressor package* and the *cold head*.

Nitrogen Flexible Lines or Flex Lines:

Nitrogen flex lines are corrugated stainless steel hoses that carry nitrogen. These lines only apply to Liquid Nitrogen Plant models.

Pollution Degree 2:

Pollution degree 2 refers to the extent to which the local environmental conditions could affect the electrical safety of the system. See EN 61010 or UL 61010A for further details.

Pulse Tube Cryorefrigerator:

A pulse tube cryorefrigerator is a *cryorefrigerator* in which the *cold head* expands the helium using a pulse tube instead of a displacer or piston.

System:

The term "system" is used as a synonym for *cryorefrigerator*. It consists of a *compressor package*, *helium flex lines* and *cold head*.

1.3.2 Acronyms

The following acronyms are used in the text and provided here for convenient lookup.

FPT Female Pipe Thread

GPM Gallons per Minute

LPM Liters per Minute

MPT Male Pipe Thread

OFHC Oxygen-Free High Conductivity (describes a form of Copper)

PSIG Pounds per Square Inch Gauge

1.4 Cryomech Contact Information

Cryomech, Inc.
113 Falso Drive
Syracuse, NY 13211

Phone: (315) 455-2555

Fax: (315) 455-2544

Email: cryoservice@cryomech.com

Website: www.cryomech.com

Section 2

Warranty

Section 2: Warranty

2.1 Statement of warranty

Provided that the customer installs, operates and maintains this cryorefrigerator according to the specifications and procedures set forth in this manual, Cryomech, Inc. extends a warranty on all parts and workmanship for a period of three (3) years or 8,000 operating hours, whichever comes first. This warranty covers all non-user serviceable components of the compressor package, the cold head and the helium flex lines. The warranty does not cover user-serviceable parts (such as fuses).

If found to be defective and in accordance with the terms of the limited warranty, Cryomech will provide warranty replacement parts at no cost to the customer. Customers are responsible for all shipping and handling charges associated with warranty repair.

The GM Cold Head is also warranted for the same three (3) years or period of 8,000 operating hours to deliver the specified temperatures and cooling capacities.-

2.2 Conditions that can void the warranty

- *Operation of the cryorefrigerator in any situation that does not meet the specifications in this section will void the warranty.* If you plan to operate the system outside any of the specified conditions, contact Cryomech. See Section 5.
- *Failure to follow these installation guidelines could result in voiding the warranty.* See Section 6.
- Because the tubes in the cold head must have very thin walls for cryogenic performance, extreme care must be taken when handling the cold head. Take special care to not dent or bend the tube assemblies. *The warranty will not cover dented or bent tubes.* See Section 6.
- *Operating the cold head in a magnetic field of greater than 500 gauss will void the warranty.* See Sections 6 and 7.
- Do not apply heat directly to the cold head (e.g. soldering anything to the cold head heat exchanger(s)). Doing so will damage the cold head and void the warranty. *The warranty will not cover heating of the cold head over 325K (125°F, 52°C).* See Section 6.
- In some applications, heavy components must be mounted to the cold surface. With the cold head oriented vertically, the maximum allowable load cannot exceed the value specified in Section 5. If your application requires a heavier load or an orientation other than vertical with a load, please contact Cryomech. An excessive load on the cold head can damage the tubes. *This type of damage is not covered under the warranty.* See Section 6.
- If the bolt pattern on the heat exchanger needs to be changed, you must consult Cryomech first to learn how to prevent damage to the cold head. *Holes drilled without prior approval from Cryomech will void the warranty.* See Section 6.
- Cooling water must meet the requirements in Section 5. *If water that does not meet the cooling water specifications in Section 5 is introduced into the system, even for cleaning purposes, it will void the warranty.* See Section 6.

- A voltage deviation of more than 10% above or below the voltage rating can cause compressor motor overheating and possible failure. *Indications of operation outside that voltage range will void the compressor warranty.* See Sections 6 and 7.
- Do not allow the flex lines to come into contact with corrosives or any type of commercial cleaning agent. *Helium leaks caused by exposure to corrosives or commercial cleaning agents will not be covered under warranty.* See Section 6.
- Do not bend the flex lines to less than 10 inch (25 cm) radius or permanent damage may occur. *This type of damage is not covered under the warranty.* See Section 6.
- CP900 Series Compressors Only - Running the CP900 Compressor Package in reverse will void the warranty. If the power cord is not wired properly the compressor will run in reverse and there will be no pressure differential on the pressure gauges. Turn the system off immediately. See Section 7.
- When adding helium, the helium must be 99.999% pure. Contamination by other gases will result in the freezing of the contaminant gases in the cold head because their freezing temperature is much higher than that of helium. Contaminants in the helium charge will severely degrade the cold head's function and it will require factory servicing. *Contamination of the helium by other gases is a common cause of premature failure and, unless resulting from a system failure, is not covered by the warranty.* See Section 8.
- Never wet either part of the system. *Water getting into the system will void the warranty.* See Section 8.

Section 3







Safety

Section 3: Safety

3.1 Safety and information symbols





3.1.1 Equipment symbols

The safety and information symbol stickers placed on Cryomech Cryorefrigerators are defined below.

	Alternating current. The symbol signifies that alternating current is present.
	Internal ground. This symbol represents an internal protective grounding terminal. Such a terminal must be connected to earth ground prior to making any other connections to the equipment.
	Warning Icon. Refer to the documents that accompany the equipment.
	The CE icon is placed on a product if the product has been tested for and meets the safety standards set by the European Community. CE stands for Conformité Européenne.
	Power switch. This symbol designates an in/out or push/push switch.
	Read the manual or handbook sign. When this symbol is found on a piece of equipment, the user should read the whole manual before starting installation or use. This symbol is found on the compressor package.

3.1.2 Icons in the manual

Definitions of Warning and Caution and Information icons in the manual

	Warning Icon. A warning message is used when failure to observe instructions or precautions could result in injury or death to humans.
	Electrical Warning Icon. An electrical warning message is used when failure to observe instructions or precautions could result in electrical shock or burns to humans.
	Caution Icon. A caution message is used when failure to observe instructions or precautions could result in significant damage to equipment and/or facilities.
	Information Icon. The accompanying message contains information to aid the operator in obtaining the best performance from the equipment or other important information that does not involve danger to equipment or humans.

3.2 Warnings and cautions

Warnings and cautions for the Cryomech Cryorefrigerator system are listed here by subsystem. The same warnings and cautions appear in the appropriate places in the unpacking, installation, operation and routine maintenance sections of this document.

3.2.1 Section 5. Specifications

Section 5.2 Technical specifications



CAUTION

Operation of the cryorefrigerator in any situation that does not meet the specifications in this section will void the warranty. If you plan to operate the system outside any of the specified conditions, contact Cryomech.

3.2.2 Section 6. Installation

Section 6.1 Cold head installation



CAUTION

Failure to follow these installation guidelines could result in voiding the warranty.



CAUTION

Because the tubes in the cold head must have very thin walls for cryogenic performance, extreme care must be taken when handling the cold head. Take special care to not dent or bend the tube assemblies. *The warranty will not cover dented or bent tubes.*



CAUTION

Operating the cold head in a magnetic field of greater than 500 gauss will void the warranty.

Section 6.1.2 Initial preparation of the cold head



CAUTION

Because the tubes in the cold head must have very thin walls for cryogenic performance, extreme care must be taken when handling the cold head. Take special care to not dent or bend the tube assemblies. *The warranty will not cover dented or bent tubes.*

**CAUTION**

Do not apply heat directly to the cold head (e.g. soldering anything to the heat exchanger(s)). Doing so will damage the cold head and void the warranty. *The warranty will not cover heating of the cold head over 325K (125°F, 52°C).*

**CAUTION**

In some applications, heavy components must be mounted to the cold surface. With the cold head oriented vertically, the maximum allowable load cannot exceed the value specified in Section 5. If your application requires a heavier load or an orientation other than vertical with a load, please contact Cryomech. *An excessive load on the cold head can damage the tubes. This type of damage is not covered under the warranty.*

**CAUTION**

If the bolt pattern on the heat exchanger needs to be changed, you must consult Cryomech first to learn how to prevent damage to the cold head. *Holes drilled without prior approval from Cryomech will void the warranty.*

Section 6.2 Compressor installation**CAUTION**

Failure to follow these installation guidelines could result in voiding the warranty.

Section 6.2.1 Prepare the compressor package location**WARNING**

The compressor package must be positioned to provide easy access to the front-panel mounted circuit breaker.

Section 6.2.2 Connect the water lines to the compressor**CAUTION**

Cooling water must meet the requirements in Section 5. *If water that does not meet the cooling water specifications in Section 5 is introduced into the system, even for cleaning purposes, it will void the warranty.*

**CAUTION**

Do not apply heat to the cooling water inlet and outlet connectors located on the front panel of the compressor.

Section 6.2.3 Connect the compressor package to the main power**CAUTION**

A voltage deviation of more than 10% above or below the voltage rating can cause compressor motor overheating and possible failure. *Indications of operation outside that voltage range will void the compressor warranty.*

**WARNING**

Be sure to follow all local electrical codes and guidelines.

**WARNING**

One lead of the compressor package is grounded. Never bypass this ground or attach the compressor package to an ungrounded circuit. A dangerous electrical hazard will develop.

Section 6.2.4 Connect the helium flex lines to the cold head and the compressor package**CAUTION**

Follow the procedure carefully when connecting and disconnecting the helium flex lines. Failure to follow the procedure can cause accidental coupling disassembly, destruction of the sealing O-ring, and helium loss.

**CAUTION**

Do not allow the flex lines to come into contact with corrosives or any type of commercial cleaning agent. *Helium leaks caused by exposure to corrosives or commercial cleaning agents will not be covered under warranty.*

**CAUTION**

Do not bend the flex lines to less than 10 inch (25 cm) radius or permanent damage may occur. *This type of damage is not covered under the warranty.*

**WARNING**

Never remove the Aeroquip® couplings from the helium flex lines without first relieving the helium charge in the line to acceptable levels. The pressure in the hose can blow off the coupling with sufficient force to cause injury.

3.2.3 Section 7. Operation

Section 7.1.1 Checks before operating



CAUTION

A voltage deviation of more than 10% above or below the voltage rating can cause compressor motor overheating and possible failure. *Indications of voltage operation outside that range will void the compressor warranty.*



CAUTION

Operating the cold head in a magnetic field of greater than 500 gauss will void the warranty.

Section 7.1.2 Startup procedure – CP900 SERIES COMPRESSOR PACKAGES ONLY



CAUTION

Running the CP900 Compressor Package in reverse for any significant length of time will void the warranty. If the power cord is not wired properly the compressor will run in reverse and there will be no pressure differential on the pressure gauges. Turn the system off immediately. Follow the instructions in Step 4, below, to rewire the power cord correctly.

Section 7.5 Disassembling the system for transport or storage



WARNING

Do not touch the cold end of the cold head until it has warmed to room temperature. If there is frost on the cold head, it is too cold to touch.

3.2.4 Section 8. Routine maintenance

Section 8.4 Replace the adsorber



CAUTION

At no time should the Aeroquip® couplings be removed from the adsorber when replacing the adsorber. Replacement can be completed without relieving system pressure since the adsorber is equipped with Aeroquip® couplings for sealed removal.

Section 8.5 Vent excess helium**CAUTION**

Venting more than 5 PSIG (.34 bar) of helium per minute will lead to improper oil migration within the system. If this condition occurs, factory service will be required.

Section 8.6 Recharge helium**CAUTION**

When adding helium, the helium must be 99.999% pure. Contamination by other gases will result in the freezing of the contaminant gases in the cold head because their freezing temperature is much higher than that of helium. Contaminants in the helium charge will severely degrade the cold head's function and it will require factory servicing.

Contamination of the helium by other gases is a common cause of premature failure and, unless resulting from a system failure, is not covered by the warranty.

**CAUTION**

No more than 5 PSIG (.34 bar) of gas should be added per minute to prevent internal oil contamination to the system. If such contamination occurs, factory service will be required.

Section 8.7 Cleaning**CAUTION**

Never wet either part of the system. Water getting into the system will void the warranty.

**WARNING**

Never remove an Aeroquip® coupling from the helium flex lines, cold head or compressor without first relieving the helium charge. The pressure in any of the components can blow off the coupling with sufficient force to cause injury.

Section 4

Inspection and Unpacking

4 Section 4: Inspection and Unpacking

4.1 Inspection of crate



IMPORTANT

IF THERE IS ANY VISIBLE DAMAGE, DO NOT OPEN OR UNPACK THE PACKING CRATE BEFORE YOU CONTACT CRYOMECH.

Be sure to note on the shipping documents any visible damage to the crate, including tip indicators that have been activated.

4.2 Unpacking

The system is packaged in a secure packing crate. The base of the packing crate is a pallet, to which the system is strapped. The walls of the crate are then placed around the system and attached to the pallet and each other with tension clips (Klimp® fasteners). After adding packing material as needed, the top is clipped onto the packing crate.

4.2.1 Directions for unpacking:

- 1) Remove the top of the packing crate by unfastening the Klimp® fasteners that fasten the top to the sides.
- 2) Check for tip indicators on the inside of the packing crate and notify Cryomech if interior tip indicators have been activated even though tip indicators on the outside were not.
- 3) Check for any visible signs of damage besides activated tip indicators.
- 4) Locate and remove the manual, and all other items that can easily be lifted out of the crate. The manual is packed in an envelope with the shipping documents.
- 5) Remove the sides of the packing crate by unfastening the Klimp® fasteners that fasten the sides to the pallet.
- 6) Remove packing material and any straps that anchor items to the pallet.
- 7) Remove the cold head box and set aside. See Section 4.3 for unpacking and inspection instructions.
- 8) Make sure that a place is prepared for the compressor package to sit (see directions in Section 6 for installation).
- 9) Retain the cold head box with all cold head packing materials and the packing crate to use in the future if you need to ship the equipment to Cryomech.

4.2.2 Specific directions for moving when unpacking

- 1) Move the cold head separately from the compressor. The cold head is much more fragile than the compressor and needs to be treated with care.
- 2) The compressor package needs to be lifted off the pallet base and onto the floor with a fork truck or a hoist. Some compressors are fitted with lifting eyebolts to aid in lifting

the compressor. See Section 5 for the weight of the compressor package. The compressor should not be tipped more than 5° at any time.

- 3) The compressor package is equipped with castors and can be rolled by hand after it is removed from the crate.

4.3 Inspection of equipment

4.3.1 Packing list

There is a packing list included with your system. The first step is to check that all parts listed on the packing list are included in the crate.

4.3.2 Compressor package

Inspect the compressor package for any signs of damage such as dents, scratches or any signs of oil leaks.

There should be a tag on the front of the compressor package that states the pressure of each gauge and the ambient temperature at the time the pressure readings were taken. Check the pressure readings on both pressure gauges. If either gauge reads 5 PSIG (.34 bar) lower than the recorded value, contact Cryomech.

4.3.3 Cold head

- 1) Inspect the box that contains the cold head for any signs of physical damage.
- 2) Remove the screws holding the cover to the box and lift the cover.
- 3) Carefully remove packing material to expose the cold head. Retain the packing material for future use.
- 4) Carefully remove the cold head from the box and place on a clean, secure work surface.
- 5) Inspect the cold head for any damage, in particular, small dents on the tubes and any scratches, especially on the mounting surface of the base plate.
- 6) Retain the cold head box and packing material to use in the future if you need to store the cold head or ship it to Cryomech.

4.3.4 Helium flex lines

Inspect the stainless steel helium flex lines for any signs of damage.

4.3.5 Cold head motor cord

Inspect the cord for any signs of damage.

The cold head motor cord is completely pre-wired with connectors at each end that attach to the cold head and compressor.

4.3.6 Tool kit

Your Cryomech Cryorefrigerator system is shipped with a box of tools. The label on the box lists the contents included inside.

4.4 Returning a system to Cryomech

Preparation of cold head, compressor, and helium flex lines

- 1) Contact Cryomech for an RMA number and for additional detailed instructions on how to properly return system components.
- 2) Repackage the system:



IMPORTANT

Use the original cold head box to minimize the likelihood of damage during shipping.

- Using the original packing material, rewrap the cold head and place in the original cold head box. The original cold head box and packing materials were designed to protect the cold head during return shipment.
 - Place the compressor package on the pallet on top of sufficient vibration dampening material to prevent the wheels from touching the pallet.
 - Strap the compressor package to the pallet, making certain that there is sufficient insulating material between the compressor and the straps so the straps will not scrape any paint off the compressor package.
 - Using protective wrap, secure the original helium flex lines (included with compressor package) and place in container.
- 3) Be sure to include shipping labels on the box showing which side is up and making clear that the shipment is fragile.
 - 4) Cryomech highly recommends using “tip and tell” indicators. These indicators are helpful in determining whether your package was handled properly or not. Replace used “tip and tell” indicators with new ones (total of three).
 - 5) When the shipment is ready, please contact Cryomech for further instructions on shipping.

Section 5

Specifications

Section 5: Specifications

5.1 Intended use of equipment

The Cryorefrigerator system is used for cooling to cryogenic temperatures. Current clients include research laboratories and universities as well as manufacturers of MRI and NMR superconducting magnets as well as other types of equipment that require cryogenic temperatures.

5.2 Technical specifications

Following are the detailed technical specifications for the cold head and the compressor package.



CAUTION

Operation of the cryorefrigerator in any situation that does not meet the specifications in this section will void the warranty. If you plan to operate the system outside any of the specified conditions, contact Cryomech.

5.2.1 Weights and dimensions

Parameter	Value	
Cold Head Weight	See Appendix A	
Cold Head Dimensions	See Appendix A for drawing	
Compressor Package Weight Air-Cooled		
CP830	176 lb	80 kg
CP820	144 lb	65 kg
CP819 and CP810	139 lb	63 kg
Compressor Package Weight Water-Cooled		
CP830	165 lb	75 kg
CP820	135 lb	61 kg
CP819 and CP810	130 lb	59 kg
Compressor Package Dimensions, Air-Cooled (L x W x H)	19 x 22 x 22 in	49 x 56 x 56 cm
Compressor Package Dimensions, Water-Cooled (L x W x H)	18 x 18 x 22 in	46 x 46 x 56 cm

5.2.2 Cooling water specifications

Parameter	Value	
Cooling Water: minimum flow @ maximum temperature	See Figure 5-1	
Maximum Inlet Pressure	110 PSIG	7.6 bar
Alkalinity	5.8 < pH < 8.0	5.8 < pH < 8.0
Calcium Carbonate	Concentration < 80 PPM	Concentration < 80 PPM

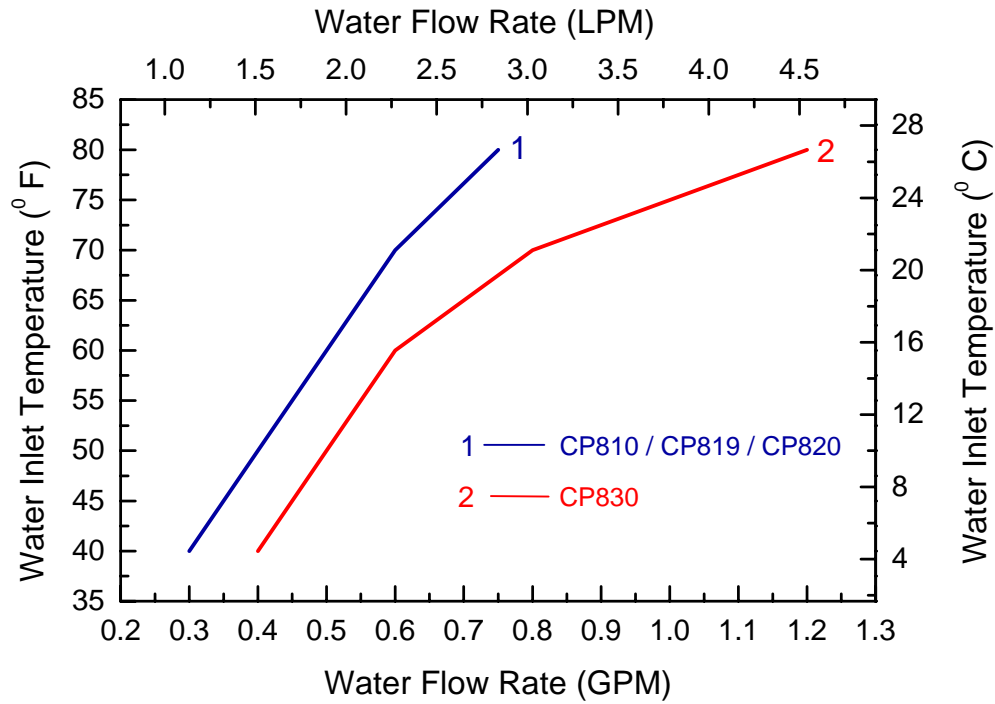


Figure 5-1: Cooling water requirement*

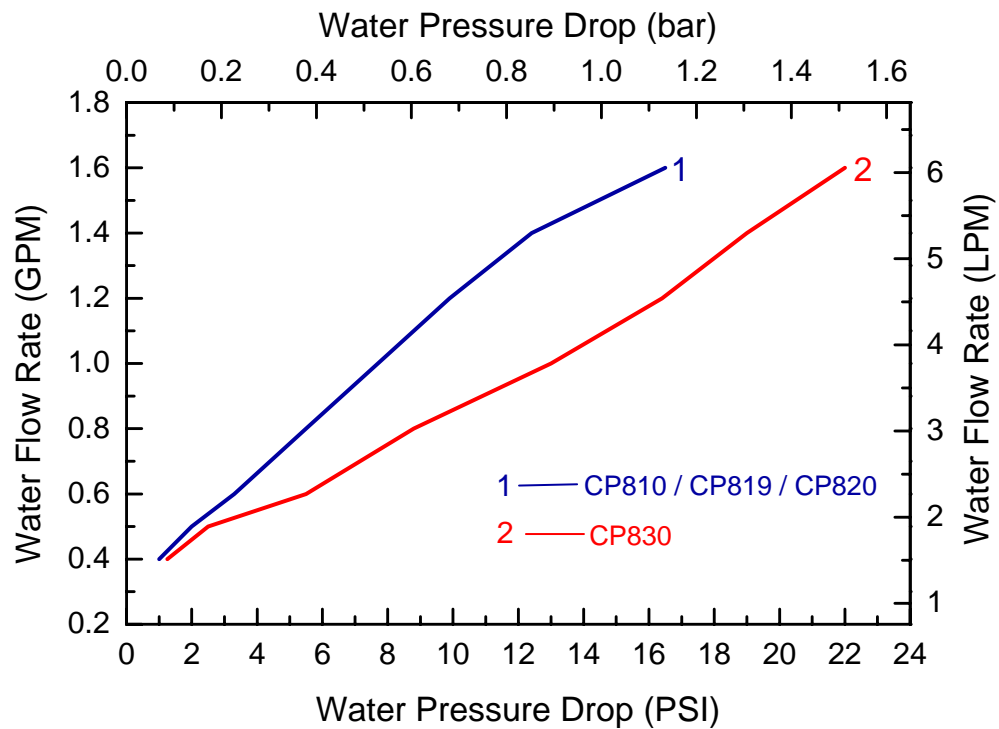


Figure 5-2: Cooling water pressure drop*

* When using a 50-50% mixture of ethylene glycol and water increase the flow rate 10%. Pressure drop values will increase 40%.

5.2.3 Electrical specifications

Parameter	115 Volt 60 Hz Model*	208/230 Volt 60 Hz Model	100 Volt 50 Hz Model*	200 Volt 50 Hz Model
Nominal voltage	115 VAC	208/230 VAC	100 VAC	200 VAC
Operating voltage range	104 – 126 VAC	188 - 253 VAC	90 – 110 VAC	180 – 220 VAC
Frequency	60 Hz	60 Hz	50 Hz	50 Hz
Phase	1	1	1	1
Mains supply voltage fluctuations	Up to $\pm 10\%$ of the nominal voltage	Up to $\pm 10\%$ of the nominal voltage	Up to $\pm 10\%$ of the nominal voltage	Up to $\pm 10\%$ of the nominal voltage
Input Power	See Appendix A			
Current				
Dedicated circuit breaker				

*CP810 and CP819 Models only

5.2.4 Fuse specifications

System Voltage	Transformer	Fuse*	Fuse Rating
100 VAC 115 VAC	100 VA	Primary	2.5 A
200 VAC 208/230 VAC	150 VA	Primary	1.5 A

*Fuse is 13/32" x 1-1/2", Type CC time delay fuses, rated for 600V.

5.2.5 Operating parameters

Parameter	Value	
Ambient temperature range*	45 to 100°F	7 to 38°C
System helium pressure	See Appendix A	
Acceptable location	Indoors only	Indoors only
Maximum altitude for use	6560 Ft	2000 m
Environment	Pollution Degree 2	Pollution Degree 2
Installation	Category II	Category II
Maximum relative humidity	80% for T < 88°F Decreasing linearly to 50% at 104°F.	80% for T < 31°C Decreasing linearly to 50% at 40°C.
Maximum sound level (air cooled)	See Appendix A	
Maximum sound level (water cooled)		

Parameter	Value	
<i>Cold head maximum load</i>		
1 st stage heat exchanger:	22 lb	10 kg
2 nd stage heat exchanger (if applicable):	11 lb	5 kg

*The compressor package is designed to operate in an ambient temperature range from 45°F to 100°F (7 to 38°C). If the temperature is below 45°F, the increased viscosity of the oil could prevent start-up and/or cause poor lubrication. Operation above 100°F will cause overheating and subsequent problems. If a unit must be subjected to either extreme, Cryomech must be consulted.

5.2.6 Safety Devices

A number of safety switches and valves are located inside the compressor package and on the cold head. They operate automatically to protect the compressor package and cold head from developing extreme conditions that can damage them. Most of them are totally transparent to the user. The ones you need to know about are described below.

High-Pressure Atmospheric Relief Valve

The compressor package high-pressure atmospheric relief valve is set at 335 ± 5 PSIG ($23 \pm .34$ bar). At pressures above 335 PSIG (23 bar) the relief valve will open automatically and relieve pressure to the atmosphere.

External Motor Overload Switch

An external motor overload switch, located on the compressor module, protects the system by sensing excessive current draw and temperature. This switch automatically resets itself after the compressor module cools to an acceptable level.

Cold Head High Pressure Relief Valve

The cold head high-pressure atmospheric relief valve is set at 425 ± 5 PSIG ($29.3 \pm .34$ bar). At pressures above 425 PSIG (29.3 bar) the valve will open automatically and relieve pressure to the atmosphere.

5.3 Description of compressor

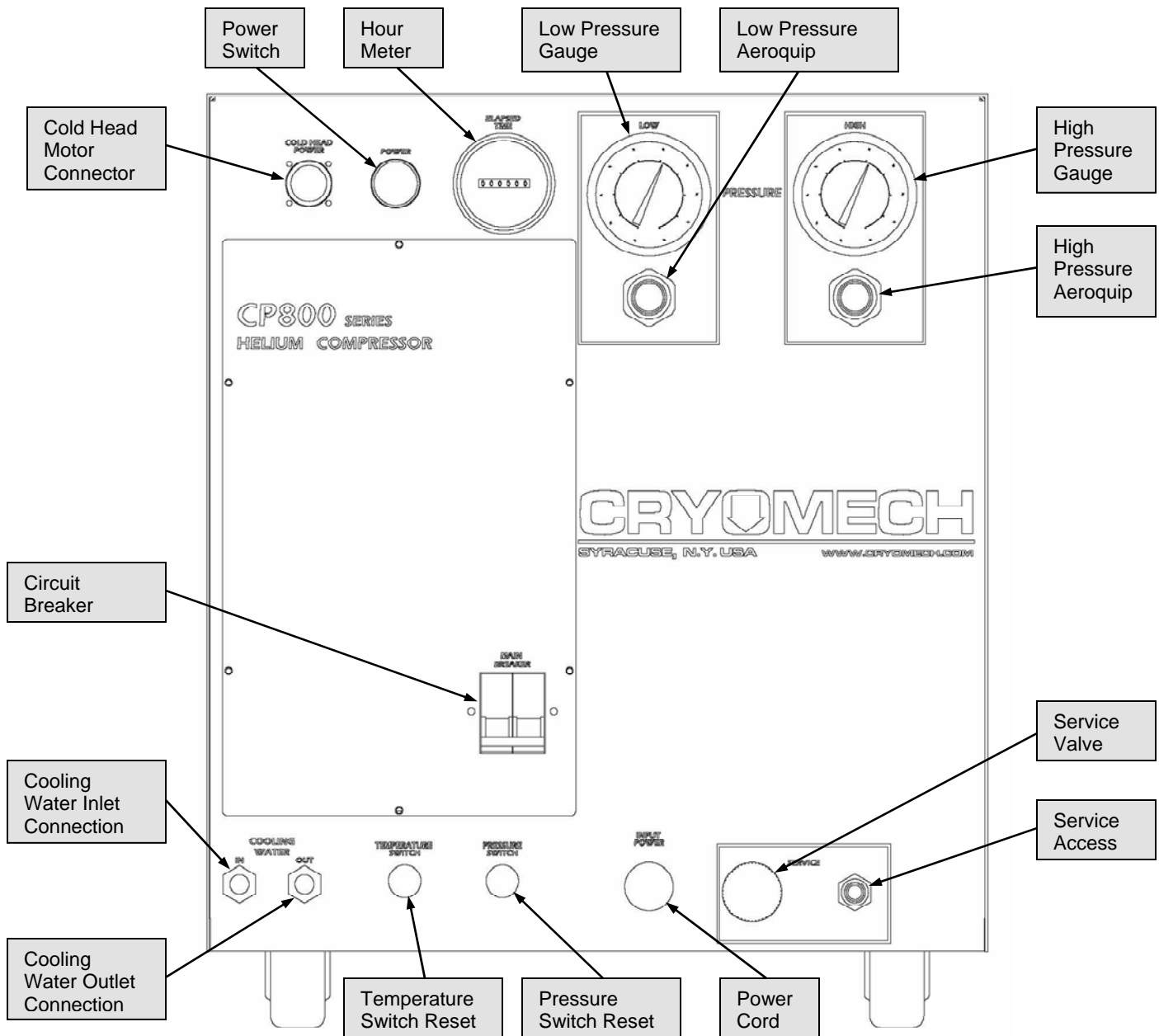


Figure 5-3: Front panel of a water cooled compressor package

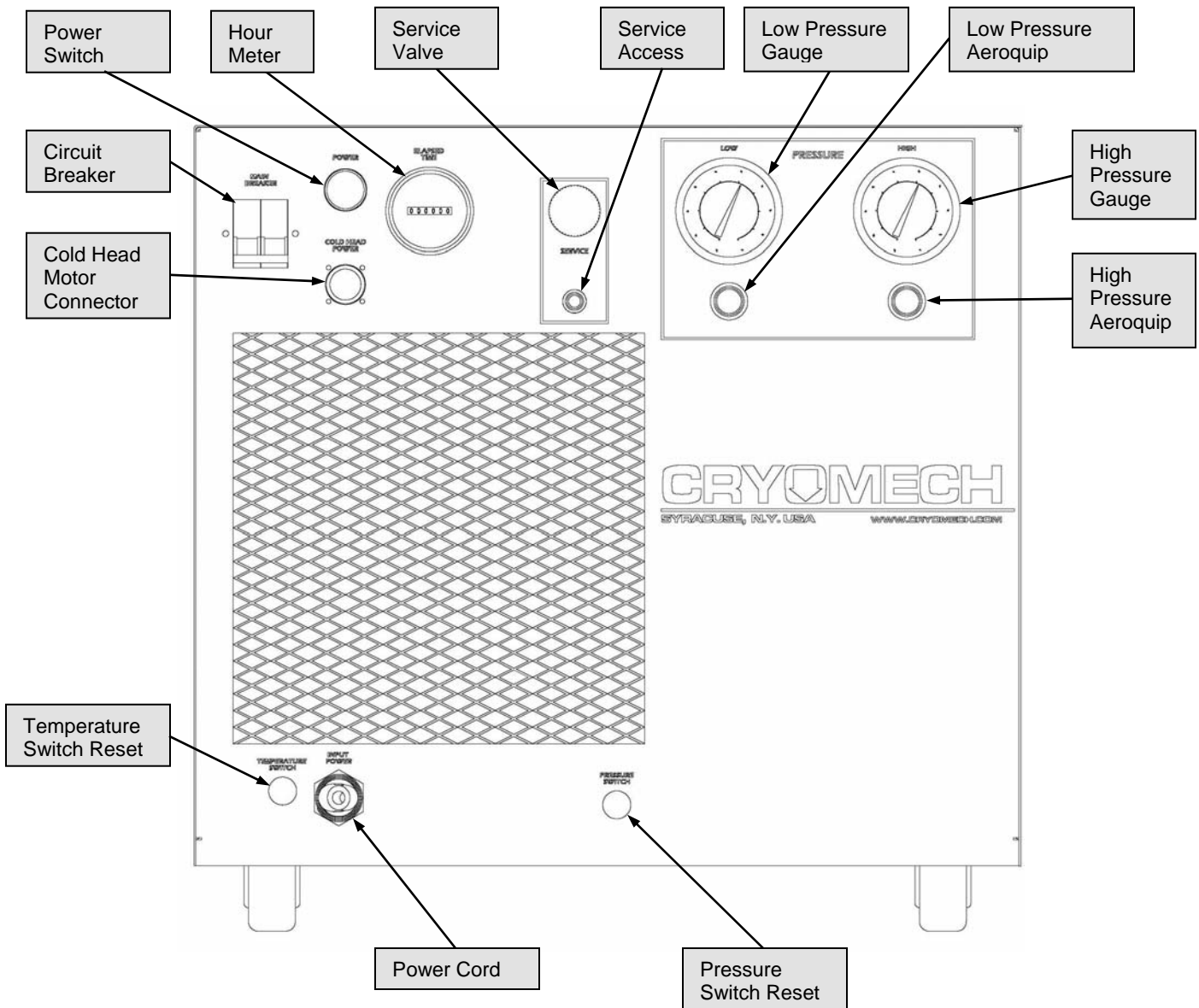


Figure 5-4: Front panel of an air cooled compressor package

5.3.1 Front panel interfaces

This section describes the function of all operator interfaces on the front panel of the CP800 Series Compressor Package, including switches and valves. It also describes the functions of all connectors, electrical cords and gauges on the front panel.

Low-Pressure Aeroquip®

The low-pressure helium flex line (not shown) fastens to the low-pressure Aeroquip® that returns helium gas from the cold head to the compressor package.

Low-Pressure Gauge

The low pressure gauge displays the pressure of the helium gas that is being returned to the compressor package. When the compressor package is off and the complete system is at room temperature, the gauge should read the pressure specified in Appendix A.

High-Pressure Aeroquip®

The high-pressure helium flex line (not shown) attaches to the high-pressure Aeroquip® that supplies compressed helium gas from the compressor package to the cold head.

High-Pressure Gauge

The high-pressure gauge displays the pressure of the compressed helium gas that is transported from the compressor package. When the compressor package is off and the complete system is at room temperature, the gauge should read the pressure specified in Appendix A.

Hour Meter

The hour meter is an elapsed time indicator located on the front panel near the power switch. The hour meter is used to keep track of times for routine servicing and part replacement, which are determined by the number of hours of active use.

Power Switch

The lighted, push button, power switch activates (starts) the entire system.

Cold Head Motor Connector

The cold head motor cord attaches to the cold head motor connector to provide power from the compressor package to the cold head motor or remote motor assembly.

Circuit Breaker

The front panel-mounted circuit breaker provides over-current protection for the cryorefrigerator and functions as a main power disconnect.

Service Valve

The service valve is the valve used to regulate the amount of helium being added to or released from the system.

Service Access

The service access is used in conjunction with the service valve for adding helium to or releasing helium from the system.

Cooling Water Inlet Connection

The cooling water inlet connection provides water to the compressor package from your facility to cool the compressor package during operation. The connector thread size is 1/4 FPT (1/4" Female National Pipe Thread).

The water must meet the specifications provided in the Cooling Water Specifications table in Section 5.

Cooling Water Outlet Connection

The cooling water outlet connection carries heated water away from the compressor package after the water has been heated by cooling the compressor package during operation. The connector thread size is 1/4 FPT (1/4" Female National Pipe Thread).

Pressure Switch Reset (Low Pressure)

The compressor package has a low-pressure shutdown switch that is set at 35 ± 5 PSIG ($2.4 \pm .34$ bar). The pressure switch manual reset button is located on the bottom of the front panel as shown in Figure 5-3 or 5-4.

Temperature Switch Reset (High Temperature)

The high temperature shutdown switch is set at 120°F (49°C). The high temperature manual reset button is located on the bottom of the front panel as shown in Figure 5-3 or 5-4. The temperature switch cannot be reset until the sensor has cooled by approximately 15°F (8.5°C).

Power Cord

The power cord supplies power from the wall to the entire system.

Section 6

Installation



Section 6: Installation

6.1 Cold head installation

The entire section on the cold head installation should be reviewed before installing the cold head.



CAUTION

Failure to follow these installation guidelines could result in voiding the warranty.



CAUTION

Because the tubes in the cold head must have very thin walls for cryogenic performance, extreme care must be taken when handling the cold head. Take special care to not dent or bend the tube assemblies. *The warranty will not cover dented or bent tubes.*



CAUTION

Operating the cold head in a magnetic field of greater than 500 gauss will void the warranty.

6.1.1 Inspect the cold head

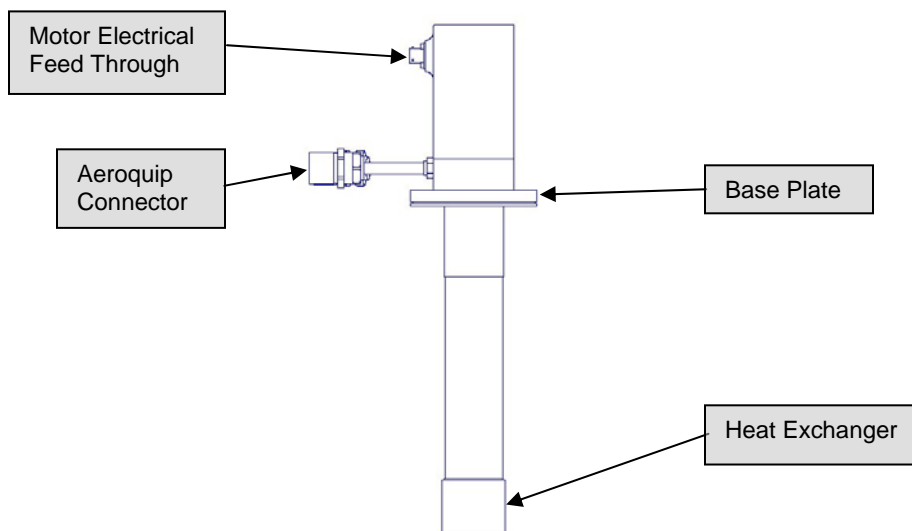


Figure 6-1: Representative schematic of a cold head

- 1) Inspect the mounting surface of the base plate for any scratches in the sealing area. Scratches or dents on the sealing surface will cause a leak from the ambient into the vacuum vessel.
- 2) Inspect the interface surfaces of the copper heat exchanger for scratches or dents before attaching anything to it. Scratches or dents will prevent good thermal contact between the heat exchanger and the object(s) attached to it.

Please notify Cryomech if scratches or dents are observed on any of the above-mentioned surfaces.

- 3) Make certain the flat gaskets are present and properly seated in the ends of the Aeroquip® connectors.

6.1.2 Initial preparation of the cold head

- 1) Clean the mating surfaces of the base plate and heat exchanger(s) with isopropyl alcohol.
- 2) Apply a small amount of vacuum grease to the mating flange O-ring (not supplied) and insert in the O-ring groove.
- 3) Join the mating flange of the vacuum chamber onto the cold head. Secure the flange to the base plate with the proper number of screws. Be certain to tighten the screws evenly around the mating surface.



CAUTION

Because the tubes in the cold head must have very thin walls for cryogenic performance, extreme care must be taken when handling the cold head. Take special care to not dent or bend the tube assemblies. *The warranty will not cover dented or bent tubes.*

- 4) Prepare the desired cold mating surface(s) and, applying a small amount of Apiezon® N grease or pure Indium foil on all cold mating surfaces, secure to the heat exchanger(s) using brass screws.



CAUTION

Do not apply heat directly to the cold head (e.g. soldering anything to the cold head heat exchanger(s)). Doing so will destroy the cold head and void the warranty. *The warranty will not cover heating of the cold head over 325K (125°F, 52°C).*



CAUTION

In some applications, heavy components must be mounted to the cold surface(s). With the cold head oriented vertically, the maximum allowable load cannot exceed the value specified in Section 5. If your application requires a heavier load or an orientation other than vertical with a load, please contact Cryomech. An excessive load on the cold head can damage the tubes. *This type of damage is not covered under the warranty.*

**CAUTION**

If the bolt pattern on the heat exchanger(s) needs to be changed, you must consult Cryomech first to learn how to prevent damage to the cold head. *Holes drilled without prior approval from Cryomech will void the warranty.*

6.1.3 Optimal installation of temperature sensors (optional)

If the application requires the use of temperature sensors to monitor performance, there are three major areas that are critical to proper monitoring:

- 1) Proper mounting of the sensor(s) on the heat exchanger(s).
- 2) Proper joining of sensor lead wires and connecting wires.
- 3) Thermal anchoring of the lead wires to the heat exchanger(s).

Many reports of poor performance are traced back to problems in one of the three above areas.

Please refer to the Technical Manual if you need more specific details on installation of the sensors.

6.1.4 Installation of heaters (optional)

If the application requires the use of heaters to optimize performance, there are three major concerns that are critical to optimum performance:

- 1) Proper mounting of the heater(s) on the heat exchanger(s).
- 2) Proper joining of heater lead wires and connecting wires.
- 3) Thermal anchoring of the lead wires to the heat exchanger(s).

Many reports of poor performance are traced back to one of the three above areas.

Please refer to the Technical Manual if you need more specific details on installation of heaters.

6.1.5 Mounting the radiation shield (optional)

- 1) Clean the radiation shield with isopropyl alcohol.
- 2) Apply a small amount of Apiezon® N grease or pure Indium foil on the shield mating surface. Attach the radiation shield with brass screws. Tighten it evenly to the first stage heat exchanger.

6.2 Compressor installation

The entire section on compressor installation should be reviewed before installing the compressor package.

**CAUTION**

Failure to follow these installation guidelines could result in voiding the warranty.

6.2.1 Prepare the compressor package location

- Confirm that the physical space containing the compressor package has an ambient temperature in the range 45 to 100°F (7 to 38°C).
- Place the compressor package in a level position. For the compressor package to operate under optimal conditions, it must be oriented within 5° of being level.



WARNING

The compressor package must be positioned to provide easy access to the front-panel mounted circuit breaker.

- Position the compressor package so there is sufficient space around it for changing the adsorber. If the compressor package cannot be moved easily to an open area, leave approximately 2 additional feet (0.6 m) clearance above and to the left and right of it.
- In addition to the above requirements, CP800 Series air cooled models require 2 feet (0.6m) of clearance in front and in back of the unit to ensure proper air flow. CP900 Series air cooled models require 2 feet (0.6m) of clearance around all four sides and 3 feet (1m) of clearance above for proper air flow.

6.2.2 Connect the water lines to the compressor



CAUTION

Cooling water must meet the requirements in Section 5. *If water that does not meet the cooling water specifications in Section 5 is introduced into the system, even for cleaning purposes, it will void the warranty.*



CAUTION

Do not apply heat to the cooling water inlet and outlet connectors located on the front panel of the compressor.

- 1) Make sure that the cooling water supply is turned OFF.
- 2) Apply Teflon tape or pipe sealant to the threads on the male pipe thread (MPT) fittings that you provide to connect to the compressor's cooling water inlet connection and the cooling water outlet connection.
 - CP900 and CP800 Series Compressors require 1/4 MPT (1/4" Male National Pipe Thread) fittings.
 - CP2800 and CP1000 Series Compressors require 3/8 MPT (3/8" Male National Pipe Thread) fittings.
- 3) Attach the fittings to the compressor's cooling water inlet and outlet connections. Turning the fitting clockwise, first hand-tighten the connection. Use a wrench to keep the compressor's cooling water connections from turning, and use another wrench to tighten fittings until snug.

- 4) Attach the supply water line to the *Cooling Water IN* fitting and the return water line to the *Cooling Water OUT* fitting.
- 5) Turn the cooling water supply ON and check for leaks.
- 6) Make certain the cooling water flow rate and inlet temperature meets the requirements in Section 5.

6.2.3 Connect the compressor package to the main power



CAUTION

A voltage deviation of more than 10% above or below the voltage rating can cause compressor motor overheating and possible failure. *Indications of operation outside that voltage range will void the compressor warranty.*

- 1) The system **MUST** be connected to a dedicated circuit breaker. The breaker must be mounted near the compressor package, within easy reach of the operator, and must be marked as the disconnecting device for the system. Specifications for circuit breakers vary according to the system's operating voltage. See the electrical specification tables in Appendix A for more information.
- 2) The compressor package comes with a main power cord attached. Assure that the length of the cord is sufficient to safely connect to the power source. If the cord is not sufficiently long, adjust the location of the compressor package.



WARNING

Be sure to follow all local electrical codes and guidelines.

- 3) Make sure that the dedicated circuit breaker is turned OFF.
- 4) The ground (or earth) wire in the power cord is either green (60 Hz systems) or green/yellow stripe (50 Hz systems). Connect the ground wire in the power cord to the ground (or earth) connector in the breaker panel, making sure to tighten the wire into the connector securely. It is important not to disable this wire.
- 5) Connect the remaining hot wires in the power cord to the corresponding lugs on the dedicated breaker in the breaker panel, making sure to tighten the connector securely. The order of the wires is not important for single phase, CP800 Series compressor packages. For 3 phase compressor packages, the order of the wires is not important at this time - correct order will be determined in Section 7.



WARNING

One lead of the compressor package is grounded. Never bypass this ground or attach the compressor package to an ungrounded circuit. A dangerous electrical hazard will develop.

6.2.4 Connect the helium flex lines to the cold head and the compressor package



CAUTION

Follow the procedure carefully when connecting and disconnecting the helium flex lines. Failure to follow the procedure can cause accidental coupling disassembly, destruction of the sealing O-ring, and helium loss.



CAUTION

Do not allow the flex lines to come into contact with corrosives or any type of commercial cleaning agent. *Helium leaks caused by exposure to corrosives or commercial cleaning agents will not be covered under warranty.*



CAUTION

Do not bend the flex lines to less than 10 inch (25 cm) radius or permanent damage may occur. *This type of damage is not covered under the warranty.*

- 1) Remove all dust caps and plugs from the helium flex lines, compressor package and cold head and place in tool kit. Save dust caps and plugs for future use.
- 2) Make certain the flat gaskets are present and properly seated in the compressor's and cold head's male Aeroquip® fittings.
- 3) With a dry, clean lint-free cloth remove any visible particles from the ends of all of the Aeroquip® couplings.



IMPORTANT

On some models, the high-pressure and low-pressure helium flex lines are not interchangeable due to the size of the Aeroquip® couplings attached to the ends of the flex lines. Before connecting the flex lines to the components, check the Aeroquip® couplings on the ends of lines to make certain they match the Aeroquip® couplings of the components.

- 4) With the wrenches supplied in the tool kit, connect a helium flex line to the low-pressure port on the compressor package front panel. See Figure 6-3. The low-pressure port is marked "Low." Tighten the connector until a positive stop is felt. *When attaching the Aeroquip® to the mating connector, make sure the threads are in alignment before you tighten the connector.*

**IMPORTANT**

When connecting or disconnecting the flex lines, Cryomech recommends using a small amount of Teflon spray lubricant. A can of lubricant is included with each system. Before using the lubricant, you must read the instructions for its use. Instructions are packaged with the lubricant and included in Appendix B of this manual.



Figure 6-3: Connecting the flex lines to a compressor package

- 5) Connect the other end of the helium flex line to the low-pressure port on the cold head. The low-pressure port is marked "Low." Tighten the connector until a positive stop is felt.



Figure 6-4: Connecting the low-pressure flex line to the low-pressure port on a cold head

- 6) With the same wrenches, connect the other helium flex line to the high-pressure port on the compressor package front panel. The high-pressure port is marked "HIGH". Tighten the connector until a positive stop is felt.
- 7) Connect the other end of the helium flex line to the high-pressure port on the cold head. The high-pressure port is marked "HIGH". Tighten the connector until a positive stop is felt.

**WARNING**

Never remove the Aeroquip® couplings from the helium flex lines without first relieving the helium charge in the line to acceptable levels. The pressure in the hose can blow off the coupling with sufficient force to cause injury.

6.2.5 Connect the cold head motor cord

- 1) Note that the female plugs attached to each end of the cold head motor cord are unique for both the compressor and the cold head.
- 2) Assure that the cold head motor cord is sufficiently long to reach the cold head. *If the cord length is not sufficient to reach the cold head, adjust the location of the compressor package or the cold head.*
- 3) To connect the cold head motor cord to the cold head, make sure that the alignment pins on the receptacle correspond to the alignment grooves on the plug. Turn the plug sleeve clockwise while pushing the plug into the receptacle. The plug is designed to “click and lock” when assembly is completed.
- 4) To connect the cold head motor cord to the compressor, align the pins on the plug with the grooves on the compressor’s connector. Push the plug onto the connector and turn the locking ring clockwise until snug.

6.2.6 Remove excess helium from the compressor package**IMPORTANT**

The system is shipped from the factory with excess helium in order to allow for some loss when assembling system components. Complete this step **ONLY** if the actual system pressure exceeds the pressure indicated in Step 1, below.

- 1) Observe both the low and high pressure gauges located on the front panel of the compressor package and determine which gauge has the lower reading. If the system helium pressure shown on the lowest reading gauge **EXCEEDS** the pressure specified in Appendix A follow the procedures in this step. Otherwise, skip this step and go to Section 7.
- 2) Assuming pressures **EXCEED** those indicated in Step 1, above, first make sure that the service valve (located on the front panel) is **CLOSED** (turned fully clockwise).
- 3) Attach the ¼" service Aeroquip® coupling to the service access.
- 4) Turning the service valve counter-clockwise, open the valve **SLOWLY**. Do not vent more than 5 PSIG (.34 bar) of gas per minute.
- 5) Observe the gauge with the lower reading. Once the gauge reaches the system helium pressure indicated in Step 1, close the service valve by turning clockwise and remove the service Aeroquip® from the service access.

Section 7

Operation

Section 7: Operation

7.1 Starting the system

7.1.1 Checks before operating

- 1) Check the system pressure - the gauges should read the pressure specified in Section 5.
 - o If the pressure is too high, vent some of the helium following the instructions in Section 6.
 - o If the pressure is too low, add helium following the instructions in Section 8.
- 2) Make sure the cold head motor cord is connected to both the compressor and the cold head.
- 3) Make sure all Aeroquip® couplings are securely fastened and the helium flex lines are oriented correctly.
- 4) Make sure the input power meets the specifications on the identification label.



CAUTION

A voltage deviation of more than 10% above or below the voltage rating can cause compressor motor overheating and possible failure. *Indications of voltage operation outside that range will void the compressor warranty.*

- 5) Make sure the flow rate and temperature range of the cooling water meet the requirements specified in Section 5.
- 6) Check that the dedicated circuit breaker is on.



CAUTION

Operating the cold head in a magnetic field of greater than 500 gauss will void the warranty.

7.1.2 Startup procedure



CAUTION

CP900 SERIES COMPRESSORS ONLY

Running the compressor package in reverse for any significant length of time will void the warranty. If the power cord is not wired properly the compressor will run in reverse and there will be no pressure differential on the pressure gauges. Turn the system off immediately. Follow the instructions in Step 4, below, to rewire the power cord correctly.

- 1) Switch on the compressor package's circuit breaker.

- 2) The compressor may be started by pushing the green power switch.
- 3) **CP900 SERIES COMPRESSORS ONLY** - *Immediately* check the low and high pressure gauges for a pressure differential of at least 200 PSIG (13.76 bar). If the system is functioning correctly, there will be an immediate increase in the high pressure gauge and an immediate decrease in the low pressure gauge. If there is NOT an immediate pressure differential, it means the compressor package is out of phase and the system is operating in reverse.
- 4) **CP900 SERIES COMPRESSORS ONLY** - Perform the following steps to correct a reversed compressor package:
 - a. Turn off the power switch.
 - b. Switch off the breaker on the front panel of the compressor package.
 - c. Turn off the dedicated circuit breaker to disconnect the system from the power at the source to prevent electrical shock.
 - d. Examine the power cord and wire colors at the panel circuit breaker.

60 Hz configuration		50 Hz configuration	
Hot	Black	Hot	Black (One - 1)
Hot	Red	Hot	Black (Two - 2)
Hot	White	Hot	Black (Three - 3)
Ground	Green	Ground (or Earth)	Green w/ Yellow Stripe

Figure 7-1: Color codes for 60 Hz and 50 Hz models

- e. If your system is fitted with a 60 Hz power cord, switch the black and red wires. If your system is fitted with a 50 Hz power cord, swap any two black wires.
- f. Energize the breakers and press the power switch. The compressor package should now operate properly.

7.2 Normal operation behavior

7.2.1 Normal pressures

On start up a pressure differential should be noticed immediately between the high and low pressure gauges. This differential will decrease as the cold head cools down.

The typical pressure differential is approximately 220 to 250 PSI (15.2 to 17.2 bar) with a 5 to 10 PSI (.34 to .7 bar) bounce on the pressure gauge needles.

Actual operating pressures at various cold head temperatures are recorded on the Cold Head Performance Table that is included with the cold head.

7.2.2 Normal sounds

When operating properly, the cryorefrigerator will emit a rhythmic squeak or chirp. This noise is an indication of the proper flow of helium gas within the system.

7.2.3 Cool down time

Refer to Appendix A for the cool down time of an unloaded cold head with no additional mass on the heat exchanger(s). If the cold head is exposed to a heat load or additional mass is attached, the cool down time will increase.

7.2.4 Normal temperatures

Refer to Appendix A for the minimum no-load temperature rating of the cold head.

This temperature will vary depending on the quality of the vacuum, the quality of the super-insulation, and the heat load brought in by the instrumentation leads.

The Cold Head Performance Table includes additional temperature data for the cold head.

7.3 Shutdown procedure

Press the power switch on the front panel of the compressor package. This will switch off the compressor system. Switch off the front-panel mounted circuit breaker to remove power from the compressor's electrical panel.

7.4 Recommended routine procedures



INFORMATION

It is helpful to monitor the cryorefrigerator daily in order to detect changes in performance early. These changes can signify degradation in performance that could result from the beginning of a problem that requires attention.

Cryomech recommends keeping regular logs of key measurements at intervals that make sense for the way you use your system.

7.4.1 High and low pressure

Changes in the high and low pressure readings on the compressor package's gauges are used for diagnosing several different types of problem. It is important to know whether changes are sudden or gradual and to know how the high and low pressures are changing relative to each other.

The high and low pressures should be monitored daily.

Cryomech recommends that you maintain a regular record, at intervals that make sense for the way you use your system, of the high and low pressure readings.

7.4.2 Cold head temperature

Temperature changes are the other key diagnostic.

If a temperature sensor is attached to the cold head's heat exchanger(s), Cryomech strongly recommends that you monitor the temperature(s) daily.

Cryomech also recommends that you keep a regular record of the temperature(s) at intervals that make sense for the way you use your system.

7.4.3 Cooling water input and output

If possible, Cryomech recommends keeping a regular record of the input and output cooling water temperatures and of the cooling water flow rate.

7.5 Disassembling the system for transport or storage

Use the following steps to prepare a Cryomech cryorefrigerator for eventual transport or storage.

- 1) Make sure that the power switch on the front panel of the compressor system is in the OFF position.
- 2) Disconnect the power to the system by switching the front panel circuit breaker to the OFF position.
- 3) Disconnect the main power to the system by switching the dedicated circuit breaker to the OFF position.
- 4) Disconnect the power cord from the external breaker panel. Coil up the power cord in preparation for transport or storage.
- 5) Disconnect the cold head motor cord from the cold head and from the compressor. Coil the cold head motor cord in preparation for transport or storage.
- 6) Turn off the water supply at the source.
- 7) Using two wrenches disconnect the supply and return water lines from the inlet and outlet fittings by turning the fittings counter-clockwise until they are released from the fittings. Store the connectors for transport or storage.
- 8) Drain the water from the compressor package. Blow remaining water out with compressed air.



IMPORTANT

4K PULSE TUBE SYSTEMS ONLY

Do not continue with the remaining steps until the cold head temperature has risen above 150K. If the cold head is disconnected from the system while below 150K, helium will expand within the cold head as it warms, escape through the pressure relief valve and require the user to recharge the system with helium before it would again operate properly.

- 9) Using the wrenches supplied in the tool kit, disconnect the high and low pressure flex lines from the compressor package by turning the Aeroquips® counter-clockwise with one wrench while holding the other wrench to prevent the flex line from twisting. See Figure 7-2.



IMPORTANT

When connecting or disconnecting the flex lines, Cryomech recommends using a small amount of Teflon spray lubricant. A can of lubricant is included with each system. Before using the lubricant, you must read the instructions for its use. Instructions are packaged with the lubricant and included in the Appendix of this manual.

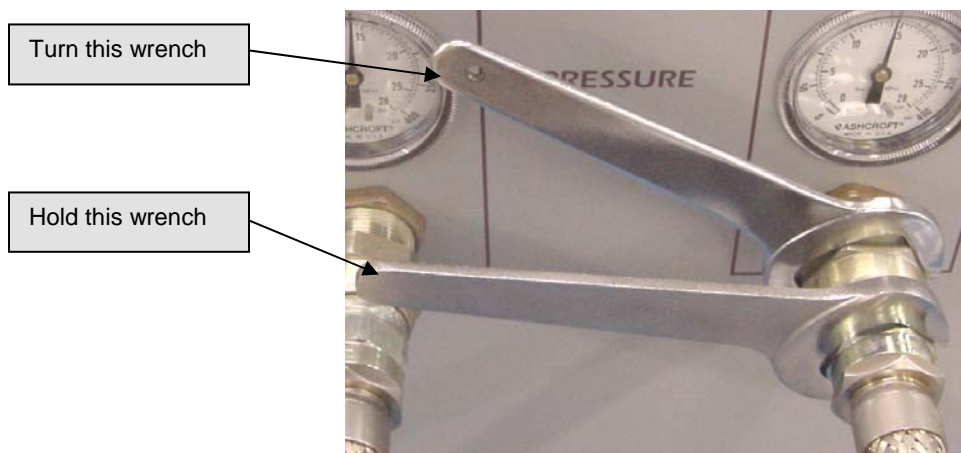


Figure 7-2: Disconnecting flex lines from a compressor package

- 10) Disconnect the Aeroquips® on the high and low pressure fittings on the cold head by turning the flexible line's Aeroquip® counter-clockwise with one wrench while holding the cold head's Aeroquip® with the other wrench. See Figure 7-3.



Figure 7-3: Disconnecting flex lines from a cold head

- 11) Install the dust plugs (that originally came with the system and are stored in the tool kit) on the female Aeroquip® couplings attached to the helium flex lines.
- 12) Install the dust caps on the male Aeroquip® fittings located on the compressor package and the cold head.
- 13) If necessary, disconnect the cold head from its mounting surface, taking care not to damage any components. Once disconnected, place the cold head in the original packaging container.



WARNING

Do not touch the cold end of the cold head until it has warmed to room temperature. If there is frost on the cold head, it is too cold to touch.

- 14) Recoil the helium flex lines and prepare for transport or storage.
- 15) Assure that all components are stored in appropriate containers and location.

7.6 Troubleshooting

7.6.1 System will not start

SYMPTOM	System will not start.
CAUSE	<ol style="list-style-type: none">1) No power supplied to the compressor package.2) Circuit breakers off.3) Pressure switch tripped.4) Temperature switch tripped.
REMEDY	<ol style="list-style-type: none">1) Check the power supply to the system and verify that it meets the requirements outlined in Section 5.2) Make certain the circuit breaker, located on the front panel of the compressor package, is on.3) Reset the pressure switch located on the bottom of the front panel of the compressor package. See Section 5.4) Reset the temperature switch located on the bottom of the front panel of the compressor package. See Section 5.

7.6.2 System starts, no pressure fluctuation

SYMPTOM	System starts, no bounce in the pressure gauges, no refrigeration.
CAUSE	<ol style="list-style-type: none">1) Cold head motor cord not connected to the cold head and/or to the compressor package.2) Aeroquip® connector(s) not completely tightened.3) High and low pressure helium flex lines reversed.
REMEDY	<ol style="list-style-type: none">1) Turn off the compressor and connect the cold head motor cord to the cold head and/or to the compressor package.2) Tighten all Aeroquip® connectors.3) Verify that one of the helium flex lines connects the high pressure port on the compressor package to the high pressure port on the cold head and that the other helium flex line connects the low pressure ports.

7.6.3 System has shut itself down. Power switch light off.

SYMPTOM	System has shut itself down. Power switch light off.
CAUSE	<ol style="list-style-type: none">1) Circuit breaker tripped.2) Interruption of the power supply to the compressor package.3) Pressure switch tripped.4) Temperature switch tripped.
REMEDY	<ol style="list-style-type: none">1) Reset the circuit breaker on the front panel of the compressor package. See Section 5.2) Check the power supply to the system and verify that it meets the requirements outlined in Section 5.3) Check the static helium charge in the system. With the complete system at room temperature, the static helium charge must meet the specification outlined in Section 5. If the helium charge is within the specification, reset the pressure switch located on the bottom of the front panel of the compressor package. See Section 5.4) Make certain the cooling water flow rate and inlet temperature meets the specification outlined in Section 5. Reset the temperature switch located on the bottom of the front panel of the compressor package. See Section 5. The switch will not reset until its sensor has cooled approximately 15°F (8.3°C).

7.7 Contact Cryomech with Questions

It is hoped that the Operations Section of this manual has helped you to obtain satisfactory results in the use of your cryorefrigerator. While the information offered should facilitate set up and operation, you may have a special situation that requires further considerations. If after reading the Operations Section, you still have questions, contact Cryomech for further information.

7.7.1 Contact Information

Cryomech, Inc.
113 Falso Drive
Syracuse, NY 13211

Phone: (315) 455-2555

Fax: (315) 455-2544

Email: cryoservice@cryomech.com

Website: www.cryomech.com

Section 8

Routine Maintenance

Section 8: Routine Maintenance

8.1 Introduction

This section contains basic, essential maintenance information. For more detailed information, consult the technical manual, which can be obtained by contacting Cryomech.

8.2 Maintenance schedule

Maintenance	Frequency	Comment
Replace cold head seals	Every 10,000 hours	See Section 8.3
Replace cold head valve and valve plate	Every 20,000 hours	See Section 8.3
Replace adsorber: CP900 Series Compressors CP800 Series Compressors	Every 20,000 hours Every 15,000 hours	See Section 8.4
Vent helium gas	As required	See Section 8.5
Charge helium gas	As required	See Section 8.6
Replace air filter – CP900 Air Cooled Compressors Only	Every 2,000 hours	See Section 8.8

8.3 Cold head



CAUTION

Service to the cold head must be performed using Cryomech parts and the appropriate technical manual.

CONTACT CRYOMECH IF THE COLD HEAD NEEDS SERVICING.

8.4 Replace the adsorber

Required tools - CP800 Series Compressors

Quantity	Description	Comment
1	1" Open end wrench	For Aeroquip® coupling
1	1-1/8" Open end wrench	For Aeroquip® coupling
1	1-3/16" Open end wrench	For Aeroquip® coupling
1	Slotted screwdriver	For ¼ turn cover screws and hose clamp

Required tools - CP900 Series Compressors

Quantity	Description	Comment
1	1-3/8" Open end wrench	For Aeroquip® coupling
2	1-5/8" Open end wrench	For Aeroquip® coupling
1	Slotted screwdriver	For ¼ turn cover screws and hose clamp

**CAUTION**

At no time should the Aeroquip® couplings be removed from the adsorber when replacing the adsorber. Replacement can be completed without relieving system pressure since the adsorber is equipped with Aeroquip® couplings for sealed removal.

- 1) Shut down the system.
- 2) Disconnect both helium flex lines from the compressor.
- 3) Water Cooled Systems - Remove the cover from the compressor package.
 - a. Remove the 8 quarter-turn screws that hold the cover on and retain them.
 - b. Lift the cover straight up and off of the compressor package.
- 4) Air Cooled Systems - Remove the right side panel from the compressor package.
 - a. Remove the 4 quarter-turn screws that hold the side panel on and retain them.
 - b. Pull the panel away from the compressor package.
- 5) Using three wrenches disconnect the Aeroquip® coupling between the adsorber and the oil separator as shown in Figure 8-1.

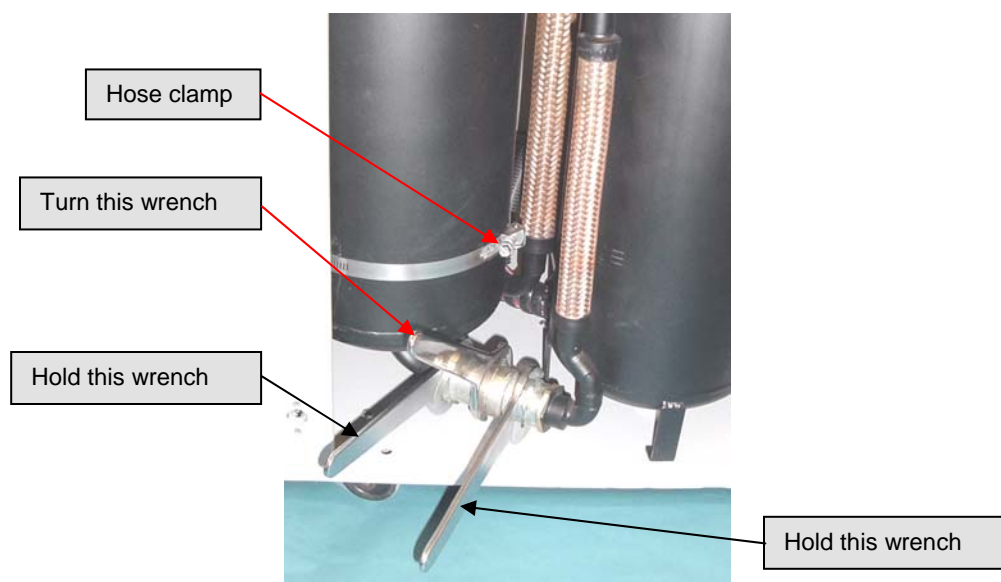


Figure 8-1: Disconnecting the Aeroquip® adsorber

- 6) Remove the nut holding the high-pressure Aeroquip® coupling to the front panel.
- 7) Loosen and disconnect the hose clamp that attaches the adsorber to the front panel.
- 8) Remove the adsorber from the compressor package.
- 9) Check the Aeroquip® couplings for oil residue. If oil is present, contact Cryomech for further assistance.
- 10) Remove the lock washer from the top Aeroquip® and install it on the new adsorber.
- 11) To install the new adsorber, reverse steps 5 through 8.

- 12) Reconnect both helium flex lines to the compressor.
- 13) Reattach the cover or side panel to the compressor package.

8.5 Vent excess helium

Required tools:

Quantity	Description	Comment
1	3/4" Open end wrench	For Aeroquip® coupling
1	Service Aeroquip® coupling	For service access port



CAUTION

Venting more than 5 PSIG (.34 bar) of helium per minute will lead to improper oil migration within the system. If this condition occurs, factory service will be required.

This procedure should only be used to vent small quantities of helium from an overcharged system.

- 1) Make sure the service valve is closed. See Figure 8-2.
- 2) Attach the small service Aeroquip® coupling to the service access port.
- 3) Open the service valve slowly. Do not vent more than 5 PSIG (.34 bar) of helium per minute.
- 4) After venting the helium, close the service valve and remove the service Aeroquip® from the service access port.

8.6 Recharge helium

Required tools and equipment:

Quantity	Description	Comment
1	3/4" Open end wrench	For Aeroquip® coupling
1	Service Aeroquip® coupling	For service access port
1	Vacuum/charging station	For adding helium



CAUTION

When adding helium, the helium must be 99.999% pure. Contamination by other gases will result in the freezing of the contaminant gases in the cold head because their freezing temperature is much higher than that of helium. Contaminants in the helium charge will severely degrade the cold head's function and it will require factory servicing.

Contamination of the helium by other gases is a common cause of premature failure and, unless resulting from a system failure, is not covered by the warranty.

This procedure should be performed with the compressor package shut down. Adding helium is possible whether or not the cold head is attached to the compressor package. Both the service access and service valve are connected to the low-pressure manifold of the compressor.

- 1) Turn the system off.
- 2) Allow the entire system, both the compressor package and the cold head, to come to room temperature.
- 3) Use only high purity helium with a minimum purity of 99.999%.
- 4) Check that the helium source and regulator are capable of pressurizing to the desired pressure.
- 5) Make sure the service valve is closed.
- 6) Attach the service Aeroquip® coupling to the service access port.

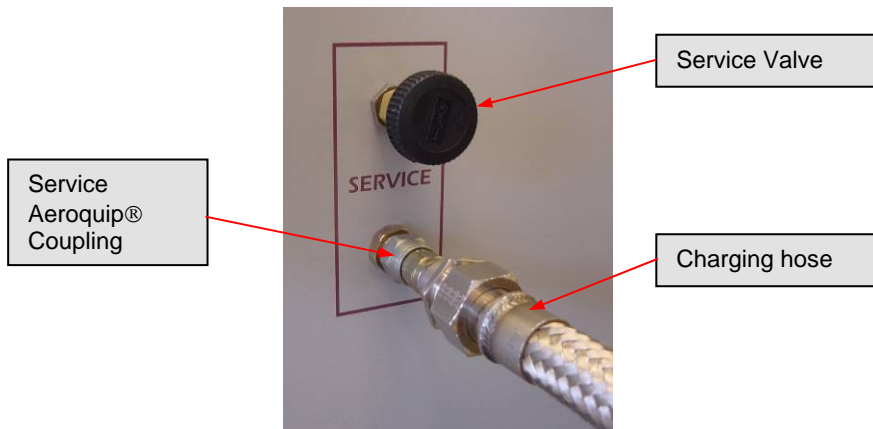


Figure 8-2: Service valve and access port

- 7) Attach a charging line from the service Aeroquip® to a typical vacuum/charging system as shown in Figure 8-3 below.



Figure 8-3: Vacuum/charging system

- 8) Evacuate to 50 microns.
- 9) Isolate the vacuum pump and add 50 PSIG (3.4 bar) of helium.
- 10) Vent the helium and repeat steps 8 to 10.
- 11) Final evacuation should be to 25 microns.
- 12) Pressurize the line to the service access with the desired amount of helium pressure.

- 13) Slowly open the service valve to add helium to the system. The final helium charge in the system is specified in Section 5.

**CAUTION**

No more than 5 PSIG (.34 bar) of gas should be added per minute to prevent internal oil contamination to the system. If such contamination occurs, factory service will be required.

- 14) After adding the helium, close the service valve and remove the service Aeroquip® from the service access.

8.7 Cleaning

8.7.1 Compressor package and cold head

The compressor package and cold head require no cleaning other than wiping the outside of each if it becomes dusty or dirty.

**CAUTION**

Never wet either part of the system. *Water getting into the system will void the warranty.*

8.7.2 Aeroquip® couplings

**WARNING**

Never remove an Aeroquip® coupling from the helium flex lines, cold head or compressor without first relieving the helium charge. The pressure in any of the components can blow off the coupling with sufficient force to cause injury.

If operated in a clean environment, the only parts of the cryorefrigerator system that are likely to require cleaning are the Aeroquip® couplings. The mating surfaces of the Aeroquip® couplings can get particles on them when the helium flex lines are detached from the compressor package and/or the cold head.

If an Aeroquip® coupling needs cleaning:

- Wipe the mating surfaces of the coupling with a dry, lint-free cloth.
- After wiping, blow off the coupling with clean, dry compressed air.
- Solvents should never be used.
- If any grease or oil gets on the Aeroquip® coupling, contact Cryomech.

8.8 Replace air filter (CP900 air cooled compressors only)

- 1) Lift the air filter access panel, located on the front of the compressor package, to gain access to the air filter.
- 2) Pull the air filter out.

- 3) Slide in a new air filter making sure the air flow arrow on the filter is pointing up.
- 4) Close the access panel.

8.9 Replaceable fuses

See the Fuse Specifications table in Section 5 for the ratings and characteristics of all replaceable fuses.

Qualified service personnel only should replace the fuses.

8.10 Manufacturer only parts

The following parts are available only from Cryomech:

Helium flex lines

The helium flex lines must be handled with care. If they become damaged and need to be replaced, new ones must be obtained from Cryomech and installed using the directions in the installation section of this manual.

Adsorber

CP900 Series Compressors - the adsorber needs to be replaced after every 20,000 hours of use.

CP800 Series Compressors - the adsorber needs to be replaced after every 15,000 hours of use.

See Section 8.4 for instructions on replacing the adsorber.

Cold head

Service to the cold head must be performed using Cryomech parts and the appropriate technical manual. Contact Cryomech if the cold head requires service.

Main power cord

If the power cord becomes damaged, a replacement should be obtained from Cryomech.

Cold head motor cord

If the cold head motor cord becomes damaged, a replacement must be obtained from Cryomech.

Appendix A

**Specifications
Cold Head Drawing
Electrical Schematic
Transformer Wire Diagram**

Specifications: AL125 with CP830

Cold head

Weight.....29 lb (13.2 kg)
 Dimensions.....See cold head drawing
 Cool down time.....15 minutes to 80K
 Lowest temperature.....25K with no load

Helium static pressure – all components @ 77°F (25°C)

60 Hz System.....210 ± 5 PSIG (14.5 ± .34 bar)
 50 Hz System.....14.5 ± .34 bar (210 ± 5 PSIG)

Maximum sound level

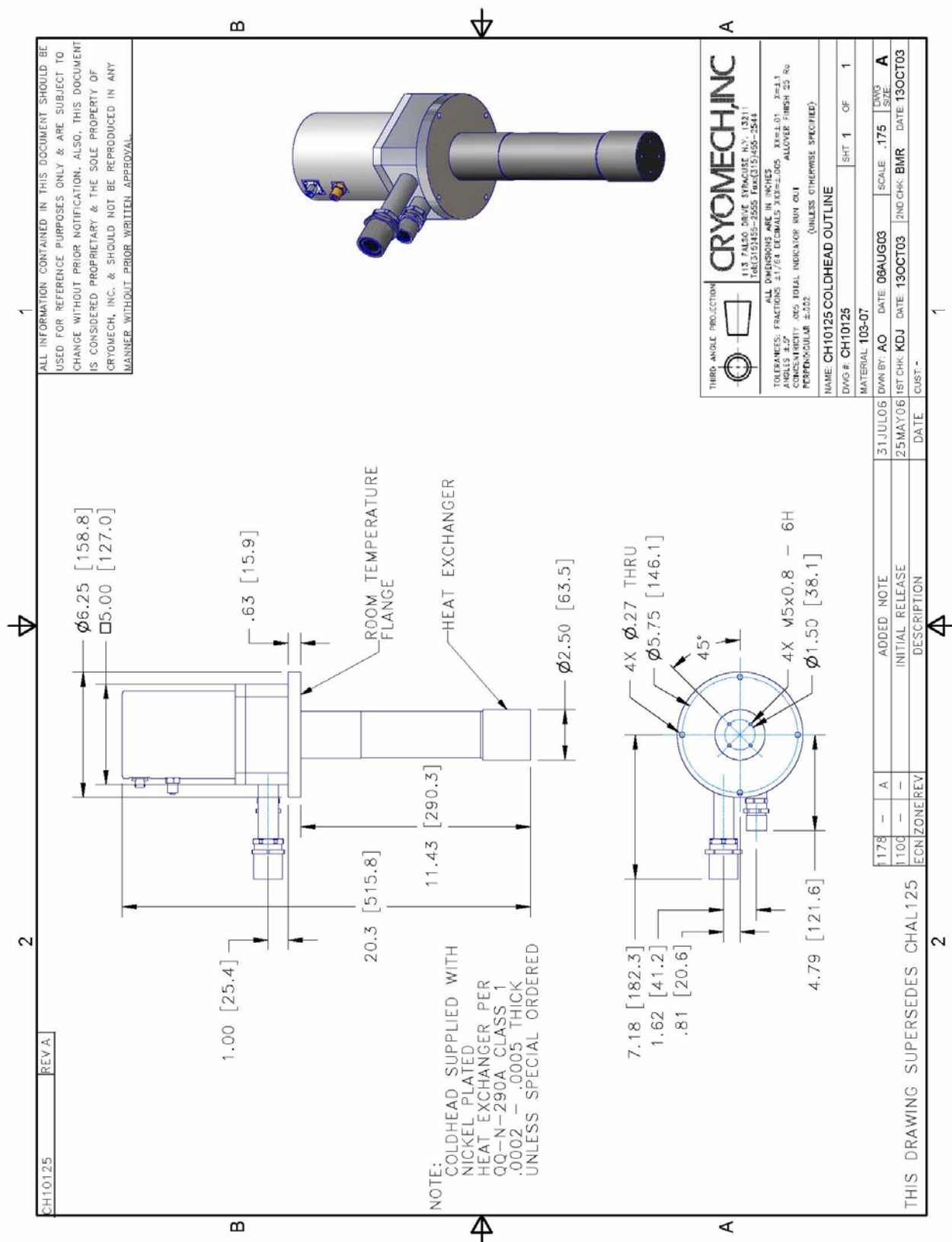
Air cooled system.....76 dBA at 1 meter
 Water cooled system.....70 dBA at 1 meter

Flexible lines

Standard length.....10 ft (3 m)
 Weight (pair)6.4 lb (2.9 kg)

Electrical specifications

Electrical Rating	Water Cooled Systems			Air Cooled Systems			Dedicated Circuit Breaker (A)
	Input Power (kW)		Maximum Current (A)	Input Power (kW)		Maximum Current (A)	
	Maximum	Steady State		Maximum	Steady State		
208/230 VAC 60 Hz	5.1	3.9	24.5	5.3	4.1	25.5	30
200 VAC 50 Hz	4.4	3.3	22	4.6	3.5	23	30



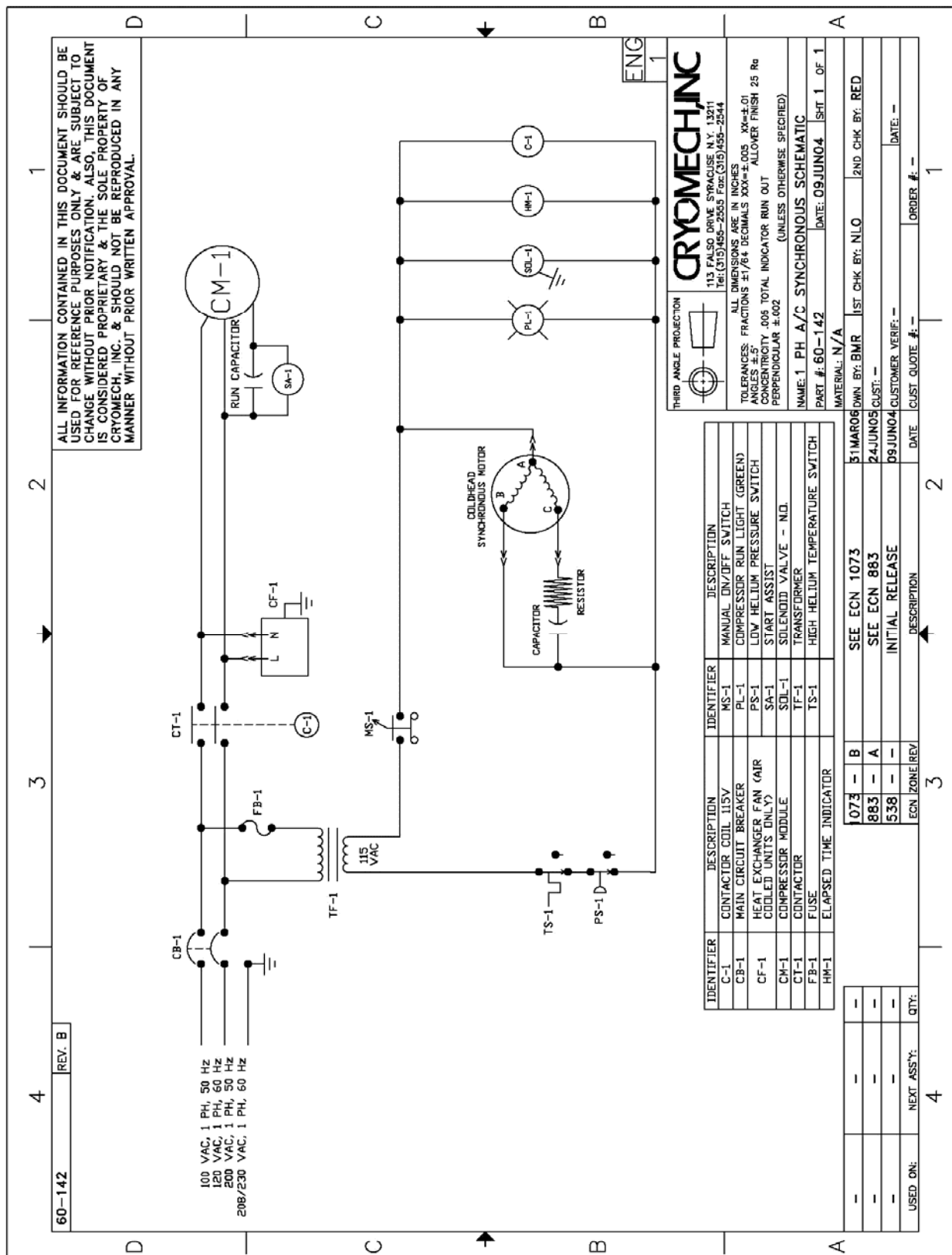


Figure A-2: Electrical Schematic

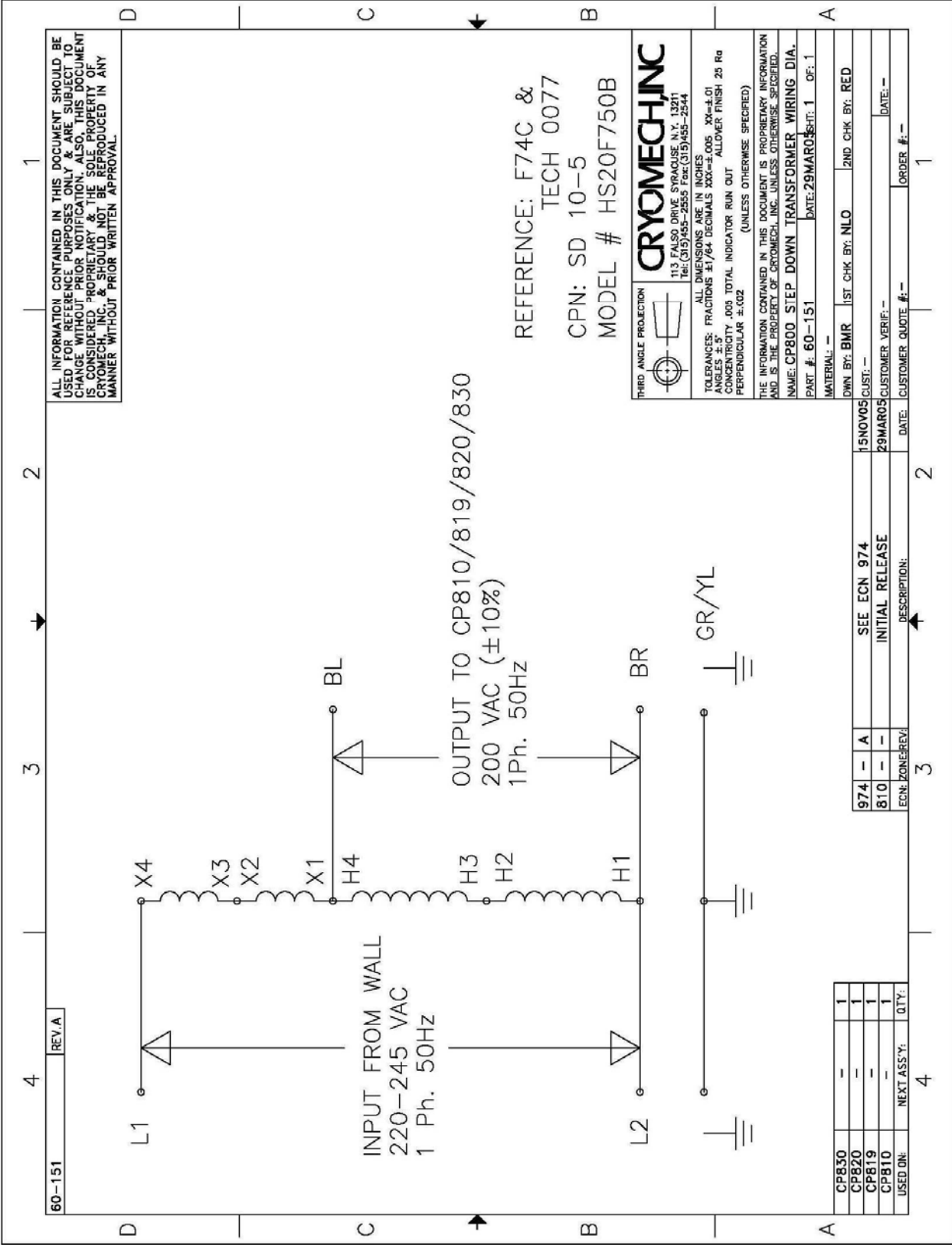


Figure A-3: Transformer Wiring Diagram

Appendix B

Spray Lubricant Instructions



Appendix B: Spray lubricant instructions

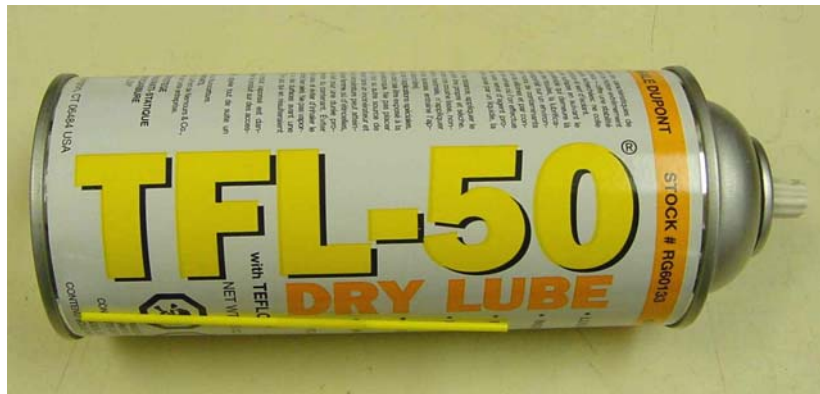


CAUTION

Failure to follow these instructions will cause performance degradation and will void the warranty on your system.

The purpose of this work instruction is to document the proper use of TFL-50® Dry Lube on Cryomech systems with Aeroquip® connectors.

Related documents and work instructions: TFL-50® MSDS



Connection, Installation

1. Prepare the mating Aeroquips® for connection
 - a. Clean the female and male Aeroquips using a lint free cloth or Q-tip.



Figure B-1: Cleaning the female Aeroquip

- b. Make certain the flat gasket is properly seated in the male Aeroquip®.



Figure B-2: Cleaning the male Aeroquip®

2. Thread the female Aeroquip® onto the male by hand, until tight.

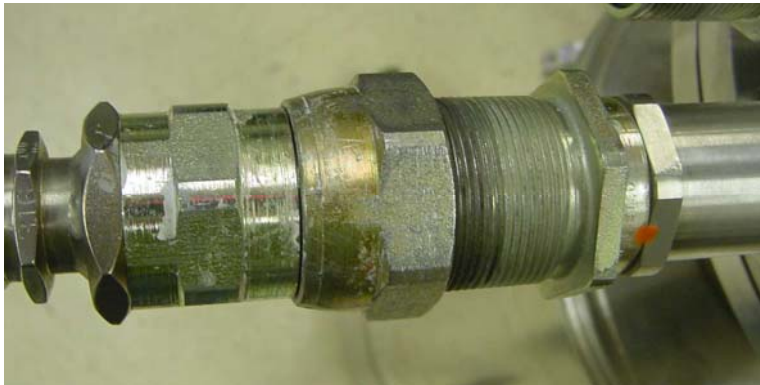


Figure B-3: Female to male connection, hand tightened



CAUTION

Never apply lubricant to the open ends of the Aeroquips®. Doing so will contaminate the system and void the warranty. Apply lubricant to the Aeroquips® only after they are hand tightened together.

3. Before using this product carefully read and follow the instructions on the can. Only a small amount of TFL-50® should be used. A typical amount is shown in Figure B-4. The spray nozzle should only be depressed for 1 second or less. If a white film appears on the surface, too much lubricant has been applied.



Figure B-4: Typical amount of lubricant

4. Apply a small amount of TFL-50® to the swivel portion of the female Aeroquip®.

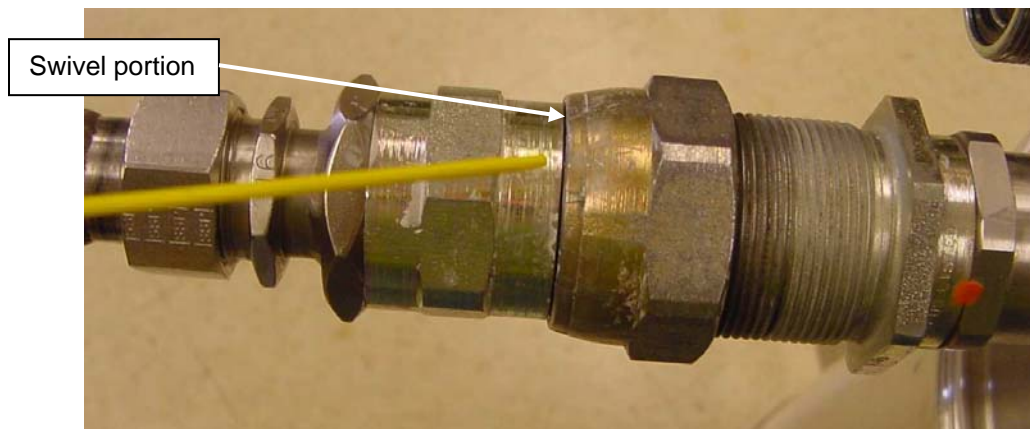


Figure B-5: Apply lubricant to swivel portion

5. Apply a small amount of TFL-50® to the threaded portion of the male Aeroquip®.

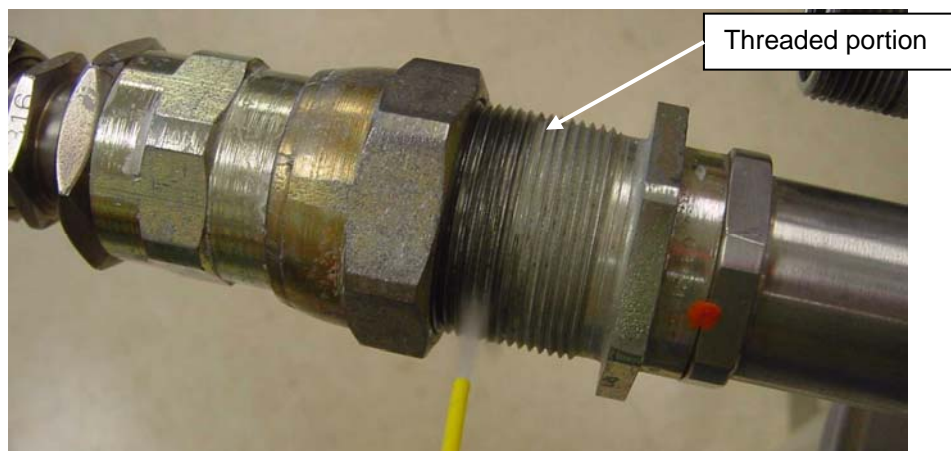


Figure B-6: Apply lubricant to threaded portion

6. Use wrenches to tighten the Aeroquips® completely (see manual for instructions).

Disassembly

1. Apply a small amount of TFL-50® to the swivel portion of the female Aeroquip® as shown in Figure B-5.
2. Use wrenches to loosen and remove the Aeroquips® (see manual for instructions).