

Instruction Manual

nXDS Replacement Tip Seal Kit

Description	Item Number
nXDS Replacement Tip Seal Kit	A735-01-801

Products Applicable to:	
nXDS6i	A735-01-983
nXDS10i	A736-01-983
nXDS15i	A737-01-983
nXDS 20i	A738-01-983
nXDS6iC	A735-02-983
nXDS10iC	A736-02-983
nXDS15iC	A737-02-983
nXDS20iC	A738-02-983
nXDS6iR	A735-03-983
nXDS10iR	A736-03-983
nXDS15iR	A737-03-983
nXDS20iR	A738-03-983



FOR SALES AND SERVICE PLEASE CALL:

PTB SALES T :: 626.334.0500
service@ptbsales.com
www.ptbsales.com

DATE SERVICED: _____

VIEW OUR INVENTORY



WWW.EDWARDSVACUUM.COM

Important safety Information

- Vacuum pumps are potentially dangerous if incorrectly used, repaired or maintained, so please approach the repair or maintenance with caution.
- Any incorrectly fitted spare parts could damage your pump and could be potentially dangerous.
- Never allow unqualified personnel to attempt to remove or replace any part of the pump.
- If you have any doubts about the servicing procedures or the products capabilities please contact Edwards.
- Before returning any equipment to Edwards for repair please follow the Edwards HS1 procedure and complete an HS2 declaration form to warn of any substances used or produced in the equipment that can be dangerous. The procedure and forms are included with the pump instruction manuals and can be downloaded together with Edwards local contact details from www.edwardsvacuum.com
- Always conform to service schedules unless adverse conditions necessitate more frequent servicing.
- Report any defect before an accident or consequential damage can occur.
- Observe local and country specific regulations, norms and guidelines.
- Never allow anyone to remove large or heavy components without adequate lifting equipment.
- Before maintenance work is begun, ensure the pump is switched off and isolated from the mains.
- The pump may have been exposed to processes which use hazardous substances or produces by-products which are dangerous to human health and safety, for example, chemically active, biologically active or radioactive substances.
- Before working on a pump, ensure that the correct personal protective equipment is available and being used. Always wear safety goggles. Wear a breather mask with positive air pressure and take other precautions if you believe the pump may be contaminated with hazardous substances and dusts.
- When applying sealants and lubricants, prevent contact with the skin by wearing suitable gloves.
- Seals may contain fluoroelastomer, which when properly handled is not dangerous but which may produce a toxic and corrosive residue (hydrogen fluoride or hydrofluoric acid) in the event of excessive heat or fire depending on the circumstances of degradation and other materials involved.
- On completion of main devices are fitted and
- If the pump is used for
- Dispose of waste oil an environmental requirer bury it.



FOR SALES AND SERVICE PLEASE CALL:

PTB SALES T : 626.334.0500
service@ptbsales.com
www.ptbsales.com

DATE SERVICED: _____

ards and protection

itness before use.

onal safety and
or water courses, or to

VIEW OUR INVENTORY

Edwards Limited
Innovation Drive
Burgess Hill,
West Sussex, RH15 9TW
Tel: +(44) 1444 253000
Fax: +(44) 1444 253001



© Edwards Limited 2016
Edwards and the Edwards
logo are trademarks of
Edwards Limited.

Contents

Section	Page
1 Replace the tip seals	1
For return of equipment, complete the HS Forms at the end of this manual.	

Illustrations

Figure	Page
1 Fan cowl removal	1
2 Tip seal fitting	2
3 Tip seal fitting	3
4 Tip seal finish mark	3
5 Motor fan lead connector	4
6 Pump side views	4
7 Replacing the tip seals	5

Associated publications

Publication title	Publication number
nXDS Scroll Pump	A735-01-880



FOR SALES AND SERVICE PLEASE CALL:

PTB SALES τ :: 626.334.0500
service@ptbsales.com
www.ptbsales.com

DATE SERVICED: _____

VIEW OUR INVENTORY

This page has been intentionally left blank.



FOR SALES AND SERVICE PLEASE CALL:

PTB SALES ☎ :: 626.334.0500
service@ptbsales.com
www.ptbsales.com

DATE SERVICED: _____

VIEW OUR INVENTORY

1 Replace the tip seals

Replace the tip seal as described below. Prepare the pump by running on gas ballast control for one hour to remove any process gases.

1. Switch off the pump and isolate from the electrical supply.
2. Undo the two screws (Figure 1, item 1) which secures the fan cowl and remove.
3. Undo the four screws (Figure 7, item 6) which secures fixed scroll assembly to the housing assembly.
4. Carefully separate the fixed scroll assembly from the housing assembly using a suitable lever in the slots provided (Figure 6).

Figure 1 - Fan cowl removal



CAUTION

Take care when separating the fan-cowl/fixed scroll assembly from the housing assembly. The motor fan lead must be disconnected from the controller before the fan-cowl/fixed scroll assembly can be fully removed (Figure 5).

5. Starting from one end (Figure 7, item 2). Insert the tip seal into the tip seal channel and remove following the scroll form and groove.
6. Using a clean dry lint free cloth, wipe the scroll form and groove. Heavier process can be used for the orbiting scroll and items that have been used for the orbiting scroll forms and grooves.
7. Taking a new tip seal and insert it into the tip seal channel of the fixed scroll:

- Starting at the centre of the scroll form, insert the tip seal into the tip seal channel. Ensure that each tip seal starts as close as possible at the start of the scroll channel. (Figure 6)

Note: The nXDS20i has multiple tip seal starts in both the Orbiting and Fixed scrolls.

- Continue to push the tip seal into the tip seal channel while working your way around the channel profile until you have reached the end. Ensure the tip seal is pressed squarely and fully home at each pinch point, these are located closer to the centre of the scroll.



FOR SALES AND SERVICE PLEASE CALL:

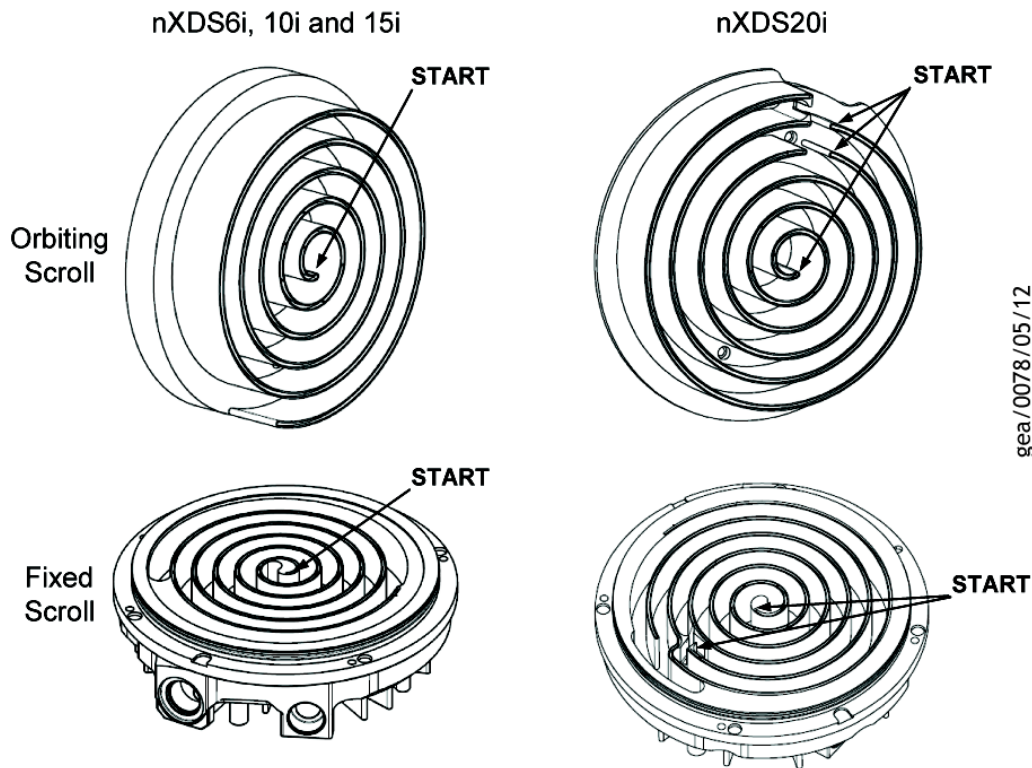
PTB SALES ☎ : 626.334.0500
service@ptbsales.com
www.ptbsales.com

DATE SERVICED: _____

VIEW OUR INVENTORY

Replace the tip seals

Figure 2 - Tip seal fitting



- Cut short the tip seal at the end of the scroll channel. There should be at least 20 mm between the end of the channel and the tip seal, this is to allow for expansion.

Note: A mark is provided at the end of all the tip seal channels to indicate where to cut the tip seal (Figure 4).

- Remove any tip seal debris which may have been produced while inserting the new tip seals.
- Fit the new O-ring onto the fixed scroll. The O-ring may be moistened with water (H₂O) only, to aid assembly (Figure 7, item 3).
 - Stand the pump on its end and carefully offer the fan cowl/fixed scroll assembly up to the housing assembly. Connect up the motor fan connector into the controller mating connector (Figure 5).
 - Assemble the fan-cowl/fixed scroll assembly onto the housing assembly by hand using even downward pressure.

Check that the alignment of the scroll. Ensure that the



FOR SALES AND SERVICE PLEASE CALL:

PTB SALES ☎ : 626.334.0500
service@ptbsales.com
www.ptbsales.com

the hole in the fixed

11. Tighten the fastener assembly onto the h

DATE SERVICED: _____

the fan-cowl/fixed scroll

Note: Care must be taken not to damage or trap the O-ring.

12. Rotate the pump by hand using a 4 mm Allen key.

VIEW OUR INVENTORY

CAUTION

The fan-cowl/fixed scroll assembly must be fitted evenly while tightening each screw, do not start by assembling one side first.

13. Reinstall your pump in accordance with Section 3 of the nXDS Scroll Pump manual A735-01-880.

14. When operating your pump following a tip seal change, ensure the fan is operating correctly.

Note: The pump tip seals may take a few hours to bed-in before full performance is restored.

Figure 3 - Tip seal fitting

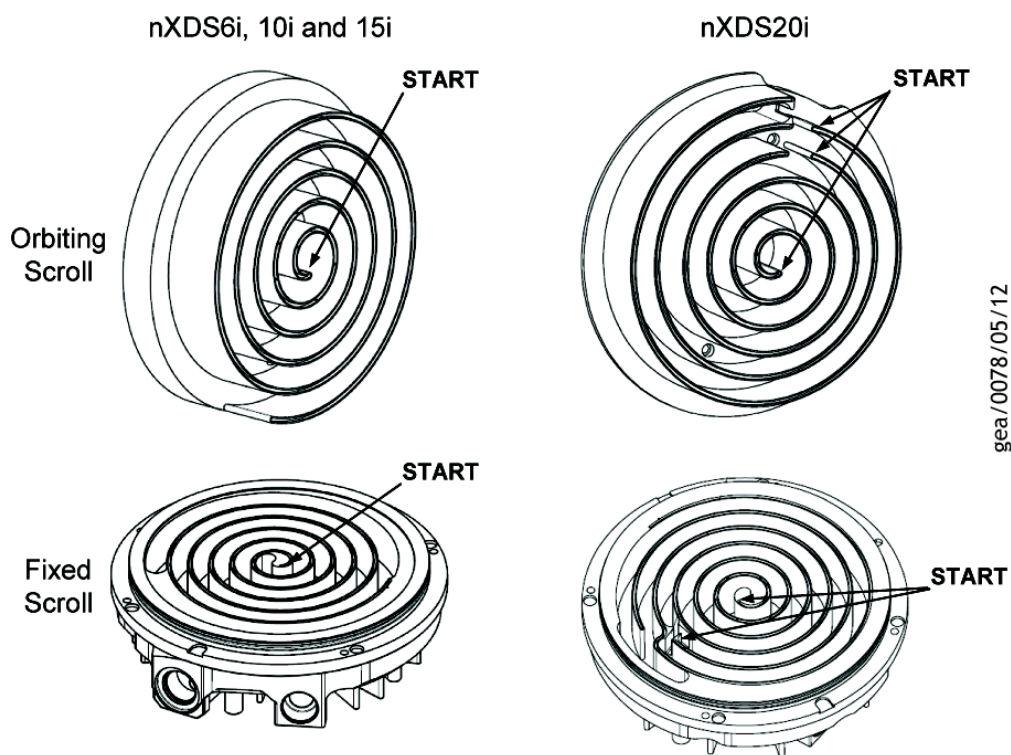


Figure 4 - Tip seal finish mark



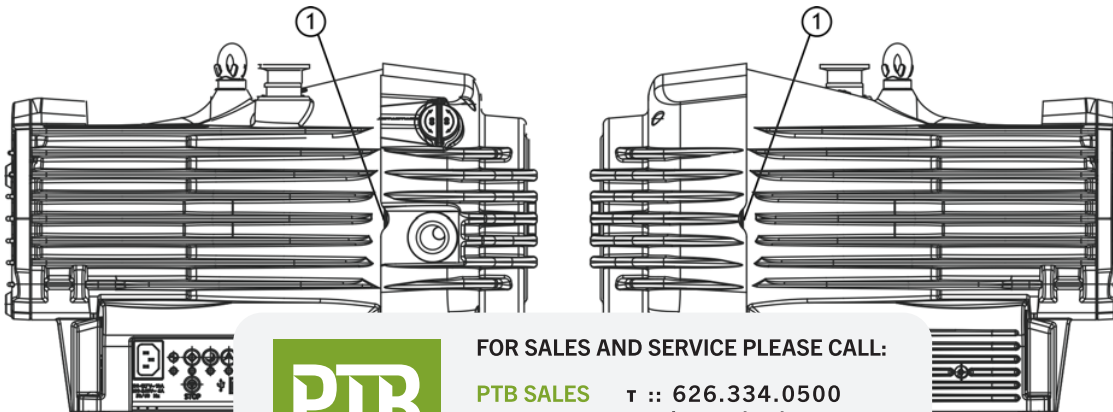
Replace the tip seals

Figure 5 - Motor fan lead connector



gea/0080/05/12

Figure 6 - Pump side views



gea/0081/06/12



FOR SALES AND SERVICE PLEASE CALL:

PTB SALES

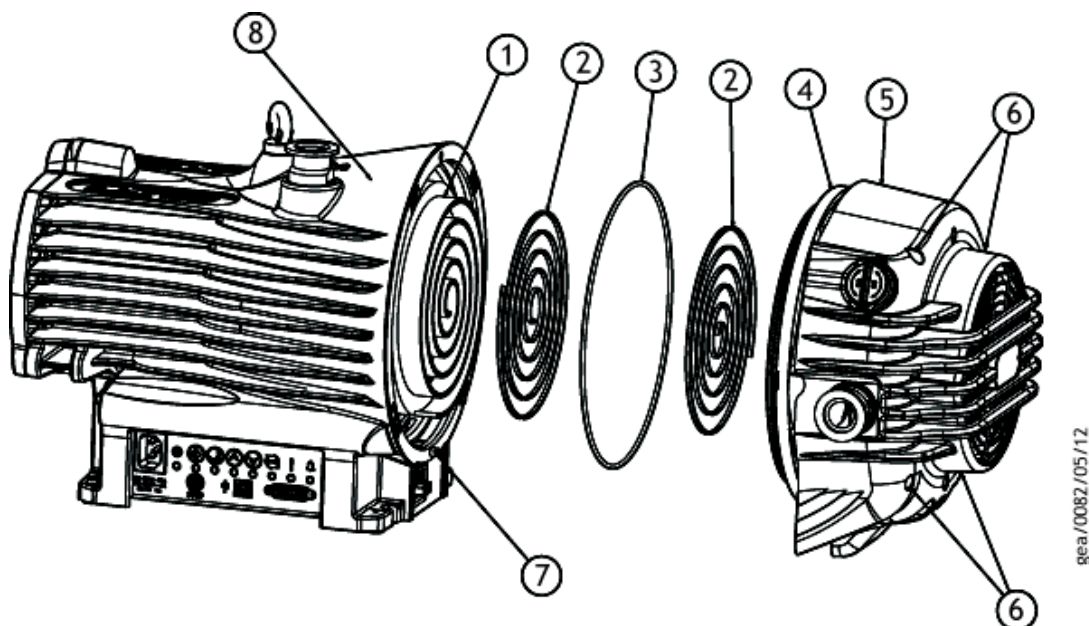
T :: 626.334.0500
service@ptbsales.com
www.ptbsales.com

DATE SERVICED: _____

VIEW OUR INVENTORY

Replace the tip seals

Figure 7 - Replacing the tip seals



1. Orbiting scroll
2. Tip seal
3. Fixed scroll O-ring
4. Fixed scroll
5. Fan-cowl/fixed scroll assembly
6. Fan-cowl/fixed scroll fixing screws (4 off)
7. Alignment dowel
8. Housing assembly



FOR SALES AND SERVICE PLEASE CALL:

PTB SALES ☎ :: 626.334.0500
service@ptbsales.com
www.ptbsales.com

DATE SERVICED: _____

VIEW OUR INVENTORY

This page has been intentionally left blank.



FOR SALES AND SERVICE PLEASE CALL:

PTB SALES ☎ :: 626.334.0500
service@ptbsales.com
www.ptbsales.com

DATE SERVICED: _____

VIEW OUR INVENTORY